

ASUS NUC

Redefining Versatility and Innovation



Powerful, Compact and Versatile
Solutions for Business and
Professionals



Table of content

About ASUS

About ASUS	3
2025 Sustainability Goal	4

ASUS NUC Overview

Redefining Versatility	5
ASUS NUC Product Line Up	6

Built on NUC Excellence

7

Innovation on Mini PC Software

11

What is AI NUC?

12

Next-Level AI Mini PCs

ASUS ExpertCenter PN54	13
ASUS NUC 14 Pro AI Series Overview	15
ASUS NUC 14 Pro AI/AI+ Tech Specs	16

Success Stories

Smart City: Aira	17
Smart Retail: meldCX	18
Smart Retail: SodaClick	19
Government IT: ClearCube	20
Smart Healthcare: Meden-Inmed	21
Media: DNEG	22

For Business

Software Innovation	24
ASUS NUC 15 Performance	25
ASUS NUC 15 Pro	26
ASUS NUC 14 Pro	27
ASUS NUC 14 Performance	28

ASUS NUC 14 Essential 29

ASUS NUC 13 Pro 30

ASUS ExpertCenter PN65, PN64-E1, PN64 31

ASUS ExpertCenter PN42, PN43 32

ASUS ExpertCenter PB63 33

For Prosumer

For Prosumer 34

ASUS NUC 15 Pro+ 35

ASUS NUC 14 Pro+ 36

For Edge Computing

NUC 13 Rugged 38

PL Series Mini PC 39

PL64 Series Specs 40

For Gaming

ROG NUC 2025 41

ROG NUC 43

Ultra-Small AI Supercomputer

ASUS Ascent GX10 46

ASUS Chromebox Solutions

ASUS Chromebox Solutions 47

ASUS Chromebox 5 Series and Chromebox CF40 48

ASUS Room Kit for Google Meet 49

Award Winning Design



In Search of Incredible

ASUS is a multinational company renowned for producing the world's best motherboards, PCs, monitors, graphics cards, routers, and servers. With a growing range of gaming, content creation, and AIoT solutions, ASUS leads the industry through innovative design and technology, creating a smart, joyful, and connected life for everyone. With a global workforce of over 5,000 R&D professionals, ASUS aims to be the world's most admired technology enterprise. Guided by the 'In Search of Incredible' brand spirit, ASUS won over 11 awards daily in 2023 and ranks among Forbes' World's Best Regarded Companies and Fortune's World's Most Admired Companies.

Over 16,000

Employees worldwide

5,000⁺

World-class R&D team

1000⁺

AI RD Employees

72,192

Awards won since 2001

Interbrand

No. 1 most valuable brand in
Taiwan for 10 years

FORTUNE

One of the World's Most Admired
Companies for 9 years

Forbes

World's Best Employee
2024

Global Presence

ASUS has a very strong global presence. Our products are recognized throughout the world and are sold in 113 countries through more than 160 branch offices worldwide. ASUS also has more than 2,200 support center across the globe that are ready to assist our customers anytime, anywhere.

75

Markets

165

Branches Offices

2,500⁺

Support Centers



Powerful solutions created with humanity in mind

To us, creating the incredible goes far beyond technology. We strive to be a world-leading high-tech company in building a better world. That's why we integrate Corporate Social Responsibility into every business decision we make – and set measurable, meaningful goals in the pursuit of an incredible tomorrow.



FTSE4Good Emerging Index for the 6th consecutive years



The Asia Corporate Excellence & Sustainability Award in 2020 (ACES)



ISS ESG Corporate rating - Prime level



S&P Global The Sustainability Yearbook – Member

Our 2025 sustainability goals

Circular Economy



- ◆ Promote sustainable procurement and increase the use of environmentally friendly materials in products and packaging by **100%**.

Climate Action



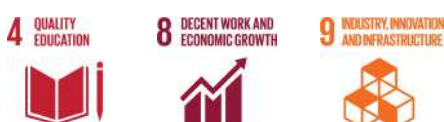
- ◆ Use **100%** renewable energy in Taiwan-based operations centers by 2030, and in global operations centers by 2035
- ◆ Ensure that key suppliers achieve a **30%** reduction in carbon intensity rates by 2025
- ◆ Key products demonstrate 30% energy-efficiency above the Energy-Star standard

Responsible Manufacturing



- ◆ Achieve labor and human rights goals by completing **100%** of RBA third-party audits of key suppliers and ensure that any necessary corrective actions are taken
- ◆ Use responsible minerals by sourcing **100%** of tantalum, tin, tungsten, gold, and cobalt from qualified smelters

Value Creation



- ◆ Intensify digital transformation and innovation efforts with the goal of a **100%** increase in sustainable value creation
- ◆ Strengthen cooperation with industry and academia to cultivate talents



Smaller, Faster, Better, AI Ready



Redefining Versatility and Innovation

Developed through a partnership between ASUS and Intel, the ASUS NUC product lines anchor on delivering uncompromised performance in the smallest form factors, backed by industry best quality and reliability. The versatility of the products shines through an array of configurations catering to diverse user needs, from smart manufacturing, to software developers, and to power users and gamers. The ASUS NUC aims to shape the next generation of PC experiences

ASUS NUC Solutions



Gaming

Build your own gaming Mini PC without compromising performance. Powered by Intel® Core™ processor (Series 2) and NVIDIA GeForce RTX™ graphics, ROG NUC pushes the boundaries of compact gaming experience.



Business

From graphics intensive workstations to collaboration hubs, NUC can put computing performance to work anywhere. The compact modular chassis and powerful components make ASUS NUCs your reliable business partner.



Edge Compute




Tested to surpass industry durability standards, ASUS NUC Mini PCs have been used primarily for digital signage, multi-display video walls, digital kiosks, and interactive displays. The versatility and reliability of NUC Mini PCs give you the solutions you need in a compact chassis.

ASUS NUC/Mini PC Product Line up

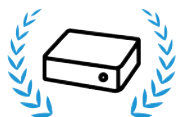
Windows

Prosumer	Business	Industry
 <p>NUC Pro Plus Series</p> <p>Style meets performance for content creators and hybrid workers.</p>	 <p>NUC Pro Series & ExpertCenter PN / PB Series</p> <p>DT grade performance in a 1L form factor, featuring easy upgradability and comprehensive connectivity for SMBs and retail uses</p>	 <p>NUC Rugged Series & Mini PC PL series</p> <p>Reliable durability and high performance ensured with metal chassis</p>
 <p>ROG NUC Series</p> <p>The ultimate choice for gamers seeking uncompromised performance and flexibility in a compact form factor.</p>		

ChromeOS

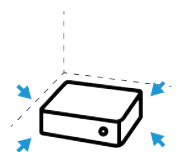
Business		Industry
 <p>Chromebox Series</p> <p>Simple, speedy, and secure solutions with Chromebox series, enabling modern employee experience with abundant I/O and Android apps</p>	 <p>ASUS Room Kit for Google Meet</p> <p>The latest smart one-touch video-conferencing solution</p>	 <p>Fanless Chromebox CF Series</p> <p>Stable thermal performance with fanless design and legacy port support, applicable for diverse commercial uses</p>

ASUS NUC: BUILT ON NUC EXCELLENCE



Best in class Performance

ASUS NUCs, powered by Intel® Core™ Ultra processors, feature robust connectivity, simple upgradability and advanced thermal design to deliver exceptional performance.



Compact But Powerful

ASUS NUCs are ready to handle even the most demanding workloads. Their compact, less-than-3-liter chassis are ideal for any field deployments, from retail to manufacturing.



Highest Quality & Reliability

ASUS products undergo rigorous noise, vibration, drop, and thermal shock tests for extended periods of time to ensure reliability.



Enterprise Level Security

ASUS NUCs are protected from malware attacks via UEFI Secure Boot, self-healing BIOS, physical lock options, Trusted Platform Module (TPM) technology, and advanced manageability features with ACC and the Intel® vPro platform.



ASUS goes above and beyond to ensure robust reliability for its NUCs and mini PCs, subjecting them to rigorous noise, vibration, drop, and thermal shock testing standards for extended periods of time.

- **1000 hours of bake testing**, far exceeding the industry standard of 150 hours.
- **1450 hours of humidity testing** at 70°C with 85% humidity.
- The **Demonstrated Mean Time Between Failure** results in real-world conditions, not just calculated estimates.

Sub

Same Performance

Local Service & Support

1%

Return Rate

5

Years as on Day 1

84

Countries

Compute Power for Every Business

NUC Mini PCs



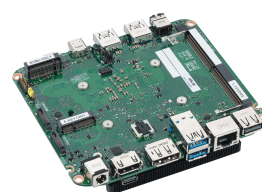
- Ready to use
- Complete Mini PCs with Windows*
- Configured and tuned for
- 3-year warranty

NUC Kits



- Ready to build configurable features
- Install your own memory, storage, and operating system (not included)
- Full range of Intel® processors
- 3-year warranty

NUC Boards



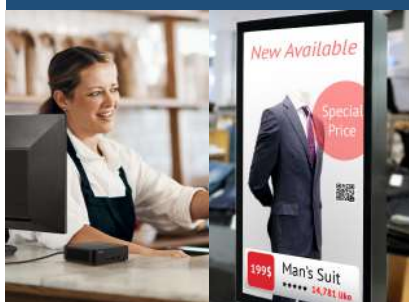
- Ready to integrate
- Soldered-on processor
- 4x4-inch form factor
- Independent of chassis for embedded use and custom design

BUSINESS



Collaboration / WFH / Office

EDGE COMPUTE



Retail / Digital Signage / Kiosks

CONSUMER



Gaming / Content Creation

Count on ASUS NUCs, Even After Purchase



Comprehensive
24x7 support



Three-year Warranty



Comprehensive
Service



MyASUS app



ASUS Premium Care



Warranty Extension



Accidental Damage
Protection (ADP)



Defective HDD
Retention(DHR)

*Please contact local sales representatives for support and services

Quality Exceeding Industry Standards



ASUS NUCs and mini PCs undergo rigorous testing to ensure that they can withstand the rigors of transportation and daily wear. These meticulous testing processes includes 15 tests in different environmental conditions, guaranteeing outstanding durability and performance. This unwavering commitment to excellence ensures that ASUS NUCs provide customers with a powerful, long-lasting solution designed to perform seamlessly, day after day.

Stringent Testing



High Temperature Test

Two 7-day cycles exposure at 33°C~71°C



Low Temperature Test

A 7 day cycle exposure at -25°C~-33°C & a 3 day cycle exposure at -21°C ~ -32°C



Altitude Test

Temperature: -20°C
Duration: 12 Hour &
Temperature: 5°C and 40°C
Duration: Two 12-hour



Humidity Test

Duration: 10 Days (Cycles)
Temperature: 30°C and 60°C
Humidity: 95% RH, constant



Shock Test

Drop height: 100 mm



Vibration Test

Test time: 40 min/axis



Cross Section

Check solder joints meet IPC 610 criteria



Temperature Shock

Confirm that solder joints will be reliable over product lifetime, >60 cycles, -40°C~100°C



Drop Test

Drop from 60cm, 1 drop each at 6 faces, 3 edges, 2 corners



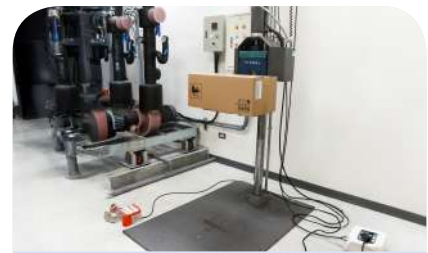
Port Test

1.5k cycle testing for connector durability, ensuring functionality and structural integrity.



Package Bump Test

Confirm that shipping package protects product against bump pulse, 4000 bumps.



Package Drop Test

Ensure product can be under protection during transportation



Noise & Audio Test

System noise levels do not exceed requirements. ISO 7779 standard test methods



Thermal Bake Test

Confirm that thermal solution performance will be acceptable with long term temp exposure



Package Vibration Test

Confirm that shipping package protects product against vibration

ASUS Mini PCs

Tortured Tested For Perfection

Mini PC is tested to withstand the rigors of transportation and the wear and tear of continuous daily use, to ensure they meet our exacting standards and exceed those used by other manufacturers.



Shock Test



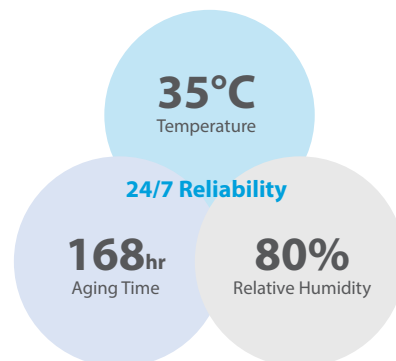
Freeze & Thaw Test



Noise & Audio Test



Vibration Test



Eco-friendly Design

ASUS NUC/Mini PCs are recipients of some of the industry's highest environmental certifications, including ePEAT Gold award and ENERGY STAR®. ASUS also exceeds legal compliance guidelines to protect customers, employees, and the environment.



ASUS INNOVATIONS ON MINI PC SOFTWARE

Design for Enterprise



BIOS Flash Update



Software Inventory



Hardware Inventory



Real-time
System Monitor



Software
Dispatch Task



Power and
Security Control



SMB

Small-sized Enterprise
Medium-sized Business



Retail

Digital Signage Kiosk



Education

Traditional Classroom
Cloud Classroom



SOHO

Home office Remote work

NUC Pro Software Suite

The NUC Pro Software Suite (NPSS) ensures device remains operational even during unexpected disconnections.



Application
Monitor



Player Failover



Remote Server
Monitor

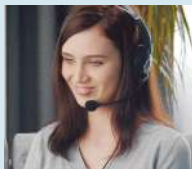


MyASUS

MyASUS is the ASUS PC software portal that provides easy access to system maintenance and updates, performance optimization, and quick contact with ASUS aftersales customer service.

AI Noise Cancelation

- Two Way Noise Cancellation



System Diagnosis

- Hardware diagnostics
- System maintenance
- Software updates



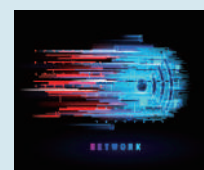
Smart Fan Control

- Performance & Quiet modes



Other Functions

- WiFi SmartConnect
- TaskFirst
- Link to MyASUS



ASUS AI Mini PC

The ASUS NUC/Mini PCs series deliver top AI performance in a compact and modular design, making them ideal for not only prosumers but also edge computing as well as small or medium-sized businesses. These compact devices feature advanced AI capabilities, powerful components, and exceptional connectivity, ensuring maximum performance in a small footprint.



What Can an AI PC Do For Us?



Productivity Enhanced

ASUS mini PCs streamline work processes by automating routine tasks. Locally-run algorithms can seamlessly unlock creativity and boost productivity.



Energy Efficiency

NPU can take on CPU/GPU workload with AI accelerators, resulting in real-time inferencing with less resource consumption.



Advanced Security

As malware attacks become more sophisticated, dedicated NPUs can offload deep learning tasks and enable continuous security monitoring.



Collaborative AI Assistant

Platforms with dedicated NPUs are enhanced with local collaboration tools, providing a virtual partner to help maximize productivity.

Power your day, the AI way

Everyday AI

Up to **99 Platform TOPS**

Everyday AI powers your essential PC apps, from office productivity softwares to digital signage systems.

Models:

- NUC 15 Pro
- NUC 15 Pro+
- NUC 14 Pro
- NUC 14 Pro+

Next Level AI

World's 1st **Copilot+ Mini PC**

Reaching triple-digit TOPS, next level AI enables advanced real-time AI processing. It also comes with Microsoft Copilot+.

Models:

- ExpertCenter PN54
- NUC 14 Pro AI
- NUC 14 Pro AI+

Advanced AI

NVIDIA® GeForce RTX™ Laptop GPU

Revolutionary graphics with up to RTX 50-series GPU, advanced AI enables accelerated image processing.

Models:

- ROG NUC (2025)
- ROG NUC
- NUC 14 Performance



Copilot+PC

Next-Level AI

World's 1st Copilot+ Mini PCs



ASUS NUC 14 Pro AI+

Unlock innovation and creativity with ASUS NUC 14 Pro AI+, featuring a customizable E-ink display for a personalized look and enhanced AI performance with up to 120 platform TOPS.



ASUS NUC 14 Pro AI

Create, achieve, and stay secure with ASUS NUC 14 Pro AI, powered by Intel® Core™ Ultra processor (Series 2), delivering AI capabilities in a <0.6L design and enhanced security with fingerprint recognition with Secure Boot.



ASUS ExpertCenter PN54

Powered by AMD processors, this ultracompact <0.6L mini PC combines exceptional AI performance with additional features such as six USB ports, fingerprint recognition, and built-in voice command support

Equipped with Microsoft Copilot

Unlock Unparalleled NPU Prowess

Engineered to exceed the highest standards, these cutting-edge NUCs/Mini PC are equipped with a dedicated Copilot button and boasts double-digit NPU TOPS to run AI workloads. It also features at least a SSD and built-in speaker with AI noise cancellation for a seamless AI interaction.

40+
TOPS NPU

Copilot Key

Unlock AI capabilities with the press of a button. The Copilot key is located on the front panel.

Integrated Voice Command

Built-in speaker with smart amp and digital microphone with AI noise cancellation

Ultimate Protection Meets Unmatched Convenience

Enhanced Security



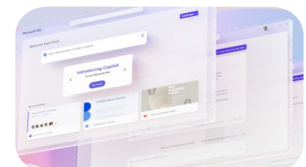
Protect your mini PCs from malware attacks with built-in TPM that encrypts data for enhanced security, along with secure boot and fingerprint recognition.

Ultrafast Connectivity

WiFi 7 **Bluetooth® 5.4**

Intel® Wi-Fi 7 offers unparalleled capacity so users can work on multiple devices simultaneously, download files without lag, and transfer data uninterrupted. Additionally, Bluetooth® 5.4 offers an extended connection range and multi-device connectivity.

Copilot+ Function



Experience accelerated productivity and creativity with Copilot+. Features like Cocreator, Recall, and Live Captions, transform your ideas into reality within seconds.

NEW ASUS ExpertCenter PN54

Compact Choice For AI-Driven Future

- AMD Ryzen AI 300 series processors and XDNA2 NPU for AI acceleration
- Dual 2.5G LAN ports and Wi-Fi 7 for fast, reliable connectivity
- Toolless access in a sleek <0.6L
- Supports Quad 4K Display



Next Level AI



Copilot+PC



reddot winner 2025

Operating System Support

Microsoft Windows 11 Pro/Home 24H2/loT/Education

CPU AMD Ryzen™ AI 7 350
AMD Ryzen™ AI 5 340

Chipset Integrated

Graphics Integrated AMD Radeon™ 860M(R7)/840M (R5) Graphics

Memory 2x SODIMMs, DDR5-5600MHz memory, supports up to 32GB*2

Storage 2x M.2 2280 PCIe4x4, supports 256GB~2TB NVMe SSD

Wireless Network Wi-Fi 7 + Bluetooth 5.4 or
Wi-Fi 6E+Bluetooth 5.4

LAN 1x 2.5Gb Ethernet +1x Optional 2.5Gb Ethernet

Front I/O Ports 1x USB 3.2Type-C (10G)
2x USB 3.2 Gen2 Type-A
1x Copilot Button
1x Audio Jack (Line out/Mic in/Headphone out/Headset)
1x Power Button

Top I/O Ports 1x Fingerprint Reader

Rear I/O Ports 1x USB 4 Type C (Supports DP2.1 and PD-in 100W support)
1x USB 3.2 Gen2 Type-A
1x USB 2.0 Type-A
1x HDMI 2.1
2x DisplayPort1.4
2x 2.5G RJ45 LAN(one is optional)
1x DC-in

Power Supply 120W

Dimension 130 x 130 x 34mm (without rubber feet)

Available SKUs

● Mini PC

● Kits

○ Boards

1. Only ASUS ExpertCenter PN54 pre-installed with Microsoft Windows® 11 64bit comes with Copilot+ PC Support
2. Free update to Copilot+ PC experiences available, timing varies by device and region, see aka.ms/copilotpluspcs for more information.



ASUS NUC 14 Pro AI

Create, achieve, and stay secure
with **Ai** innovation



- World's 1st AI Mini PC with Intel® Core™ Ultra (Series 2)
- Built-in mic and speaker for voice command
- Fingerprint recognition and Secure Boot
- Copilot Button for quick AI access



Copilot+PC WiFi Bluetooth 5.4 THUNDERBOLT

* Copilot+ PC experiences are coming. Requires free updates available starting later this year. Timing varies by device and region. See aka.ms/copilotpluspcs

Powered by the latest Intel® Core™ Ultra 9 processors (Series 2), NUC 14 Pro AI/AI+ delivers up to 120 platform TOPS to accelerate AI workloads. They also feature an Intel® Arc™ 140V/130V GPU with Xe2 architecture — the first GPU to integrate LPDDR5x-8533 MT/s memory-on-chip, providing up to 1.5X the bandwidth of traditional DDR5.

+18%

Fastest CPU Core⁽¹⁾

up to
50%

Most Efficient x86
Processor⁽²⁾

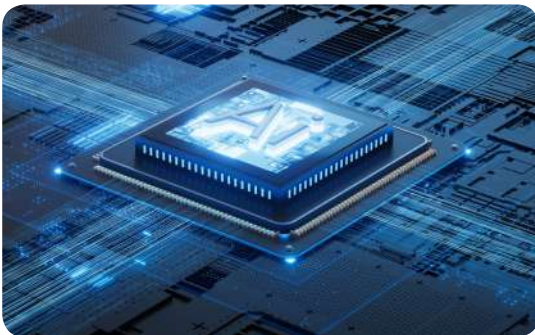
up to
2x

Better GPU power
efficiency⁽³⁾

up to
1.8x

Peak performance
uplift⁽⁴⁾

Note: (1) vs. Intel® Core™ Ultra 7 155 H
(2) vs. Intel® Core™ Ultra 7 165 H
(3) vs. previous generation of Intel® Arc™ GPU
(4) vs. Intel® Core™ Ultra 7 155H



Enhanced AI Capabilities

ASUS NUC 14 Pro AI+ is the world's first compact Copilot+ PC, delivering up to 48 NPU TOPS and tripling the AI performance of the previous generation. By processing locally on the device, the NPU ensures fast, efficient, and private AI experiences.

up to
48 NPU TOPS

up to
3x
AI Performance*

Note: *vs. Intel® Core™ Ultra 7 155H on UL Procyon® AI NPU Int8

Customized AI-Powered E-ink Display

NUC 14 Pro AI+



Unlock Your Creativity

Personalize your identification icon on the Multi-Color E-ink.



Eco-Friendly Design

E-ink display remains visible even when powered off



Power Efficiency

Consumes up to 99% less power than traditional LCD displays



NEW NUC 14 Pro AI Mini PC

Operating System Support

Windows® 11 Home/Pro 24H2
Windows® 11 IoT Enterprise
RedHat Rhel-server-9.3
Ubuntu 23.10
Fedora 1.6
OpenSUSE-Leap-15.5

CPU

Intel® Core™ Ultra 9 288V/32G Memory
Intel® Core™ Ultra 7 258V/32G Memory
Intel® Core™ Ultra 7 256V/16G Memory
Intel® Core™ Ultra 5 228V/32G Memory
Intel® Core™ Ultra 5 226V/16G Memory

Chipset

Integrated

Graphics

Integrated Intel® Arc™ 140V/130V Graphics

Memory

Embedded LPDDR5x- 8533 MT/S 16G/32G Memory on Processor

Storage

1x M.2 2280 PCIe4x4, supports 256GB~4TB NVMe SSD

Wireless Network

Wi-Fi 7(802.11be) 2*2 + Bluetooth® 5.4

Speaker

1x Internal Momo-Speaker with External Smart Amp

LAN

10/100/1000/2500 Mbps, 2.5G Intel® LAN

TPM

fTPM 2.0 or TPM 2.0 Chip (Optional)

Front I/O Ports

1x Power Button
1x Copilot Button
1x Thunderbolt™ 4 (Supports DisplayPort 2.1)
2x USB 3.2 Gen1 Type-A (5 Gbps)
1x Audio Jack (Line out/ Mic in/Headphone out)

Top I/O Ports

1x Fingerprint Module

Rear I/O Ports

1x Thunderbolt™ 4 (Supports DisplayPort 2.1)
2 x USB 3.2 Gen2 Type-A (10 Gbps)
1 x HDMI port
1x 2.5G RJ45 LAN
1x DC-in

Power Supply

120W Power Adapter

Dimension

130 x 130 x 34mm (0.5476 L)

Available SKUs

● Mini PC ● Kits ○ Boards



NEW NUC 14 Pro AI+ Mini PC

Windows® 11 Home/Pro 24H2
Windows® 11 IoT Enterprise
RedHat Rhel-server-9.3
Ubuntu 23.10
Fedora 1.6
OpenSUSE-Leap-15.5

Intel® Core™ Ultra 9 288V/32G Memory
Intel® Core™ Ultra 7 258V/32G Memory
Intel® Core™ Ultra 7 256V/16G Memory
Intel® Core™ Ultra 5 228V/32G Memory
Intel® Core™ Ultra 5 226V/16G Memory

Integrated

Intel® Arc™ 140V/130V Graphics

Embedded LPDDR5x-8533 MT/S 16G/32G Memory on Processor

1x M.2 2280 PCIe4x4, supports 256GB~4TB NVMe SSD

Wi-Fi 7(802.11be) 2*2 + Bluetooth® 5.4

1x Internal Momo-Speaker with External Smart Amp

10/100/1000/2500 Mbps, 2.5G Intel® LAN

fTPM 2.0 or TPM 2.0 Chip (Optional)

1x Power Button
1x Copilot Button
1x Thunderbolt™ 4 (Supports DisplayPort 2.1)
2x USB 3.2 Gen1 Type-A (5 Gbps)
1x Audio Jack (Line out/ Mic in/Headphone out)

1x Fingerprint Module
1x Multi-color E-ink and LED Ring

1x Thunderbolt™ 4 (Supports DisplayPort 2.1)
2 x USB 3.2 Gen2 Type-A (10 Gbps)
1 x HDMI port
1x 2.5G RJ45 LAN
1x DC-in

120W Power Adapter

130 x 130 x 34mm (0.5476 L)

● Mini PC ○ Kits ○ Boards

Empowering AIRA AI-Tracking Surveillance Solutions in Compact ASUS NUC

aira



About Aira

Aira, founded in Taiwan in 2020, specializes in AI-based facial biometrics and solutions across various vertical markets such as live sports, entertainment, manufacturing, and retail. Aira's unique advantage lies in efficiently running AI algorithms on low-power CPUs, handling complex tasks without the need for a GPU.

Challenge: Implementing Scalable AI-Tracking Solutions

Aira was looking for a solution that mitigates the high costs of GPU-intensive algorithms while offering a compact design that fits into confined spaces. Powerful processing and 24/7 reliability, even in harsh conditions, were also requirements for its deployments.

Solution: ASUS NUC Enables Smart Tracking at the Edge

- The Intel® Core™ Ultra processor that powers ASUS NUC is able to take over heavy image processing workloads from GPU, whilst still ensuring enhanced efficiency.
- Global availability of preconfigured hardware and support enables rapid deployment of Aira's solutions.
- Compact and customizable design makes NUCs ideal for field deployments.
- Compatibility with software like Intel OpenVINO™ toolkit for edge- based image processing enables real-time responses.



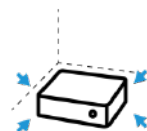
ASUS NUC 14 Pro



PERFORMANCE



GLOBAL SUPPORT & AVAILABILITY



SPACE SAVER



RELIABILITY

Streamlined Security and Enhanced Efficiency

Unlike many AI solutions still in the proof-of concept stage, Aira delivers AI solutions ready for immediate local implementation. With just one NUC, Aira solutions can support up to 20-50 cameras, making NUC an ideal choice for large-scale field deployments. Leveraging ASUS NUC's reliability and durability, Aira has introduced a suite of AI solutions tailored to various industries, including construction sites, factories, and retail spaces.



NUC-Powered AI Digital Signage Drives 3.5x Boost in Retail Sales

meldCX®



About meldCX

Since being founded in 2017, meldCX® has been dedicated to help retailers optimize customer experiences. It created Viana™ – short for vision analytics – trained using anonymized synthetic data that leverages advanced cloud computing and edge inference to deliver fast, accurate near real-time insights.

Challenge: Low Visibility Into Digital Signage Performance

meldCX® is looking for a powerful edge device that can deliver personalized ads, and can be easily deployed and integrated with existing infrastructure.

Solutions: ASUS Enable Vision Analytics at the Edge

- Scalable NUC portfolio ensures optimal balance of capabilities and cost in retail vision analytics systems powered by meldCX® Viana.
- NUC's flexible hardware configuration options and support for Chrome, Windows, Ubuntu Linux, and OpenVINO streamline integration of Viana retail analytics with customer infrastructure.
- Stocked and available worldwide, ASUS NUC products create a worry-free supply chain for any deployment.
- Global aftersales support ensures high uptime and helps drive digital signage revenue for customers.



ASUS NUC 13 Pro



SCALABLE



CUSTOMIZATION



READY AVAILABILITY



GLOBAL SUPPORT

End Customer Doubled ROI up to 3.5x

The partnership has provided hardware foundation needed for the company to scale and deploy its vision analytics in retail. For one retail customer, the company has completed deployments at over 250 screens across multiple shopping malls. Building on this success, meldCX® has expanded its business, actively deploying in North America, APJ, and EMEA. As they do so, the company remains confident in its ability to scale and grow into new global markets, thanks to its partnership with ASUS.



Quick-Service Restaurants AI Finds Its Voice with Efficient ASUS NUC



About SodaClick

SodaClick, a British company pioneering in conversational AI technology, is transforming the self-service ordering experience with natural, human-like engagements in drive-throughs, kiosks, and other order-taking applications. The company's AI platform uses natural, unscripted language to overcome shortcomings of script-based training models.

Challenge: Deploying Conversational AI-Powered Ordering

SodaClick needed to deploy its conversational AI across diverse applications and in different languages, even during network disruptions. Additionally, all AI transcription data had to be encrypted for privacy.

Solutions: ASUS NUC Enables Automated Ordering

- ASUS NUC offers a cost-effective and reliable solution. Minimal downtimes reduces need for repairs, with high uptimes lowering total cost of ownership and providing customers with high ROI.
- Cloud-to-edge compatibility with Intel® technologies like OpenVINO™ allow for efficient workload portability.
- Powered by up to an Intel Core™ Ultra 7 processor, ASUS NUC offers exceptional performance and can support complex AI interactions.



RELIABILITY



EASE OF USE



PERFORMANCE



COST-EFFECTIVE

AI-Powered Ordering System Customers Actually Love

With ASUS NUC, SodaClick now has a high-performance solution that can create customized experiences while boosting customer loyalty and reducing client costs. The partnership accelerated the development process of localizing its LLMs, allowing SodaClick to capitalize on its first-to-market advantage. Now the company's clients can deploy conversational AI to handle customer interactions without worrying about Internet outages and other service disruptions.



ASUS NUC 12 Pro

Flexible NUCs Adapt to Federal Customer Requirements



About ClearCube

Since 1977, ClearCube Technology has been at the forefront of secure computing solutions. Today, ClearCube offers a comprehensive suite of solutions including blade PCs, zero clients, and customized mini PCs based on ASUS NUC platform, with a specialization in creating secure solutions for federal agencies.

Challenge: Overcoming Federal Clients Requirement

ClearCube's federal customers sought a solution that included removable storage to streamline security procedures, along with fiber-based connectivity for high-security networks. Additionally, ruggedization was critical as the systems could be subjected to rough handling and frequent transportation.

Solution: ASUS NUC Enables Secure Federal Computing

- The readily-customizable nature of ASUS NUC served as a perfect starting point for ClearCube's solutions.
- ASUS' commitment to the NUC form factor gave ClearCube the confidence to invest in custom housing.
- Metal housing is extremely durable and allows easy access to the storage drives.
- ASUS NUC includes an M.2 PCIe® that's able to support fiber connectivity.



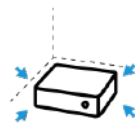
ASUS NUC 13 Pro & Board



GLOBAL
AVAILABILITY



STANDARDIZED
FORM FACTOR



SPACE-SAVING



PERFORMANCE

Streamlined Security and Enhanced Efficiency

The ClearCube-ASUS partnership has significantly improved the computing experience for federal customers by addressing key pain points and delivering a tailored solution. Key outcomes include enhanced data security through removable storage, improved network security with native fiber connectivity, increased durability with custom metal housing, space optimization with a compact form factor, consistent performance from Intel processors, and a simplified supply chain based on the ASUS NUC platform.



ASUS MINI PCS EMPOWERING MEDICAL INNOVATION: A CASE STUDY WITH MEDEN-INMED

Compact and powerful ASUS Mini PCs have been successfully deployed across a wide range of commercial and industrial fields. One such notable case is Meden-Inmed, a Polish firm that's a major manufacturer and distributor of medical equipment.

About Meden-Inmed

When the medical industry in Poland was still in its infancy in 1989, Meden-Inmed was already ahead of the game and recognized the need for advanced software-based devices. They developed an image archiving system that could capture and store images on computers. Today, the company has shifted its focus to neurorehabilitation equipment for neurologically impaired patients, with their flagship product being the Axelero gait and balance training device



Overview:

When the medical industry in Poland was still in its infancy in 1989, Meden-Inmed was already ahead of the game and recognized the need for advanced software-based devices. They developed an image archiving system that could capture and store images on computers. Today, the company has shifted its focus to neurorehabilitation equipment for neurologically impaired patients, with their flagship product being the Axelero gait and balance training device.



The Opportunity: Connecting and Integrating Peripherals

The **Axelero Gait & Balance training device** requires seamless connectivity with multiple peripherals, including user screens and walking machines. To achieve this, a compact host device was essential, allowing for adjustments to the BIOS. Meden-Inmed's flexibility in modifying the mechanical design of the Mini PC ensured compatibility with their gait training devices, facilitating smooth integration during the design and development process.



The Solution: ASUS Mini PC as the small server

Meden-Inmed identified ASUS Mini PC as the ideal solution for their equipment. With its compact shape, high performance, stability, and expandability, ASUS Mini PC perfectly complemented Meden-Inmed's needs. Moreover, ASUS worked closely with Meden-Inmed to modify the BIOS, customizing it to meet the unique requirements of the company.

Driving Medical Progress: Collaborative Success

The collaboration between Meden-Inmed and ASUS Mini PCs has played a vital role in advancing medical progress and improving patient outcomes in the Polish market. The outstanding performance, reliability, and adaptability of ASUS Mini PCs have positioned them as the preferred choice for Meden-Inmed's innovative solutions. Through this successful partnership, Meden-Inmed has been able to leverage the exceptional capabilities of ASUS Mini PCs to enhance the recovery of patients across Poland. The seamless integration of ASUS Mini PCs into Meden-Inmed's medical equipment has contributed to improved efficiency, reliability, and overall quality of care. This collaborative success showcases the power of cutting-edge technology and strategic partnerships in driving medical advancements and ultimately benefiting patients.



SUCCESS CASE DNEG

TRANSFORMING GLOBAL WORKFLOWS THROUGH ASUS MINI PC



At the forefront of innovation

Founded in 1998, DNEG is one of the world's leading visual effects and animation studios for feature film and television. Initially founded as a small team in London, DNEG has grown into a global powerhouse with multiple facilities across multiple continents. The company's success comes from its commitment to excellence and its ability to embrace cutting-edge technology, creative talent, and a deep understanding of storytelling. After 25 years of industry experience, DNEG has produced some of the world's most high profile titles including films such as Dune, Inception, Blade Runner 2049, Interstellar and series such as Stranger Things, Foundation and The Last of Us. DNEG's work has been honored with 7 Academy Awards, 7 BAFTA Awards and many Visual Effects Society Awards for best VFX in recent years.

THE CHALLENGE

Having offices around the world, DNEG requires a seamless integration of visual effects into the overall filmmaking process. With over 11,500 staff employed globally, DNEG needs a workflow that enables its artists to truly work from anywhere and anytime. Previously, DNEG had physical workstations that followed the artist around; an artist would sit in front of a desk and their workstation would sit underneath that desk. Will Lucas, the Head of Technical Operations at DNEG, comments on how this workflow was not fully empowering their artists' workflows. "While that obviously had its benefits, it was quite a clunky way of working because it meant that you didn't really have much flexibility in the way that artists worked on their physical location."



"Working with ASUS has been an absolute dream. Being able to approach someone very quickly and very easily on multiple different channels and have honest and open conversations about our needs has been absolutely vital for the way that we've used the ASUS Mini PCs at DNEG."

– Will Lucas, Head of Technical Operations

THE SOLUTION



Fully customizable mini PCs for artists across the glob

DNEG replaced its physical workstations with ultracompact ASUS Mini PC PN series. With these palm-sized yet powerful computers, artists had more flexibility in their workflows. Hence, an artist in one location could access a virtual machine via the Mini PC into another location. Thanks to the ASUS Mini PC, DNEG can now create any kind of hardware configuration based on their needs and requirements within their virtualized environment.

Powered by AMD Ryzen™ processor

The ASUS Mini PCs are powered by the AMD Ryzen™ 5000 series processor which provides a smooth and powerful multitasking experience. DNEG is also able to connect up to four 4K displays into their workflows. This has made its artists' experience easier and more enjoyable than before. As a result, DNEG was able to streamline their workflows even in more demanding workloads.

THE OUTCOME

ASUS Mini PCs enable DNEG to remain innovative and on the cutting edge of technology. As Will Lucas points out, DNEG needs to be able to look forward to the future and plan what products are needed to stay competitive. Knowing that both ASUS and AMD were working on this development was an integral part of DNEG's decision to proceed with the ASUS Mini PCs.



ASUS Mini PC



DNEG case video

For Business

Flexible, versatile, customizable

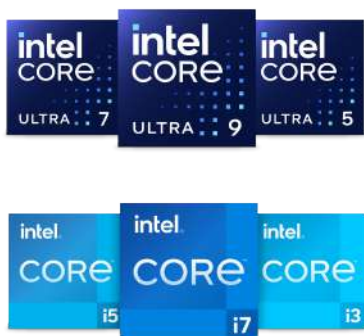
The perfect solution for every business need.

From office to conference rooms,
signage to IoT



ASUS NUC/Mini PC For Business

NUC packs the power of the latest-generation, full-size desktop PCs into a form factor small enough to hold in your hand. They range from NUC boards for embedded applications to ready-to-run business mini PCs.



Full-size desktop PC performance. Tiny NUC

Choose the latest Gen Intel® Core™ processors with extensive I/Os—including USB 3.1 ports, HDMI, Thunderbolt™ 4 technology, Gigabit Ethernet—all packed into a range of flexible, customizable form factors.



Multidisplay 4K video and graphics

NUC can drive multiple 4K displays while processing multiple streams of incoming video via Thunderbolt™ 4 technology. Multiple dedicated graphics cores rip through 3D animation, CAD models, and video rendering. This makes NUC equally adept as high-performance workstations and digital signage PCs.



Built for commercial environments

NUC Pro and Rugged Mini PCs, kits, and boards are certified for 24/7 operation and offer additional features for commercial environments. These include persistent display emulation, variable input voltage, and HDMI CEC.



Intel vPro® platform*

The Intel vPro® platform delivers the performance, security, manageability, and stability businesses need to be productive and efficient. Look for Intel vPro platform-eligible NUC Mini PCs, kits, and boards.

* The SKUs listed may not cover all SKUs and all specifications are subject to change without notice. Please check with your supplier for exact offers. Products may not be available in all markets.

ASUS Power Sync

The combination of ASUS NUC and a monitor compatible with ASUS Power Sync unlocks the full potential of your devices, bringing more organization and productivity to your day.



ASUS Power Sync function allows users to simultaneously control power status of an ASUS NUC and monitor via HDMI CEC. Simply navigate to MyASUS app to enable the ASUS power sync function

For Diverse Usages



Commercial

Power cash registers, POS systems, and digital signage with stable performance and simplified setups for retail.



IT Managers

Streamline device integration, reduce clutter, and provide employees and staff with a clean, easy-to-use workspace.



Home Users

Create a tidy, efficient setup where all your devices work seamlessly together in a clutter-free space.

※ Please visit [asus.com/business/blog/asus-power-sync](https://www.asus.com/business/blog/asus-power-sync) for more information on compatible models.

Intel® Wi-Fi Proximity Sensing

Integrated proximity-sensing technology detects the user's presence, intelligently locking or waking your device to reduce power consumption while maintaining responsiveness.

Walk Away Lock



Wake On Approach



NUC 15 Performance

Power Ahead. Maximize Efficiency

- **Next Level Performance:** Equipped with Intel® Core™ Ultra 9 and Intel® Core™ Ultra 7 processors (Series 2) for a 18% gen-over-gen improvement
- **AI-Powered Graphics:** NVIDIA® GeForce RTX™ 5070/5060 Laptop GPU for stunning visuals
- **Ultra-Smooth Streaming:** Equipped with Intel® Killer™ Wi-Fi 7 for transfer speeds up to 2.4X faster and Bluetooth® 5.4
- **QuietFlow Cooling:** Advanced three-fan system and dual vapor chamber provide efficient cooling and quiet operation



Processor Included	Intel® Core™ Ultra 9 275HX, cTDP (45-75)	Intel® Core™ Ultra 7 255HX, cTDP (45-65)
Discrete Graphics	NVIDIA® GeForce RTX™ 5070 Laptop GPU	NVIDIA® GeForce RTX™ 5060 Laptop GPU
Board Number	NUC15JNLU9X6	NUC15JNLU7X4
Supported Operating Systems	Windows 11 Home 64-bit Windows 11 Pro 64-bit Windows 11 Pro Education 64-bit Windows 11 IoT Enterprise 64-bit Ubuntu 24.04 LTS 64-bit RedHat Enterprise Linux 64-bit	Windows 11 Home 64-bit Windows 11 Pro 64-bit Windows 11 Pro Education 64-bit Windows 11 IoT Enterprise 64-bit Ubuntu 24.04 LTS 64-bit RedHat Enterprise Linux 64-bit
CPU Total Cores	24	20
CPU Total Threads	24	20
CPU Max Turbo Frequency	5.4 GHz	5.2 GHz
# of Memory Slots	2	2
Memory Types	CSO-DIMM, Up to DDR5-6400, 48GB	CSO-DIMM, Up to DDR5-6400, 48GB
Max # of Memory Channels	2	2
ECC Memory Supported*	No	No
Internal Drive Form Factor	M.2 SSD	M.2 SSD
# of Internal Drives Supported	2	2
Removable Memory Card Slot	No	No
M.2 Card Slot (storage)	22x80	22x80
Graphics Output	1 x HDMI 2.1 (FRL) 2 x DP 1.4a	1 x HDMI 2.1 (FRL) 2 x DP 1.4a
# of Thunderbolt™ Ports	1 x Thunderbolt 4 Type-C	1 x Thunderbolt 4 Type-C
# of USB Ports	6	6
USB Configuration	Front: 2 x USB 3.2 Gen2 Type-A 1 x USB 3.2 Gen2 Type-C; Rear: 1 x Thunderbolt™ 4 USB4 Type-C w/ DisplayPort™ 2.1 2 x HDMI 2.1 FRL port 2 x DisplayPort 2.1 ports 4 x USB 3.2 Gen2 Type-A 1 x RJ45 LAN 1 x DC-in	Front: 2 x USB 3.2 Gen2 Type-A 1 x USB 3.2 Gen2 Type-C; Rear: 1 x Thunderbolt™ 4 USB4 Type-C w/ DisplayPort™ 2.1 2 x HDMI 2.1 FRL port 2 x DisplayPort 2.1 ports 4 x USB 3.2 Gen2 Type-A 1 x RJ45 LAN 1 x DC-in
Audio (back channel + front channel)	Realtek ALC3251	Realtek ALC3251
Integrated LAN	Intel® Ethernet Controller E3100G, 2.5G	Intel® Ethernet Controller E3100G, 2.5G
Wireless Included	Intel® Killer™ Wi-Fi 7 BE1750x (Gig+), Bluetooth® 5.4	Intel® Killer™ Wi-Fi 7 BE1750x (Gig+), Bluetooth® 5.4

NUC 15 Pro

Best Compact Choice for AI Driven Future

- The Intel® Core™ Ultra processor (Series 2) with up to 99 Platform TOPS is optimized for a wide range of workloads.
- Superior connectivity includes Intel® Wi-Fi 7, Wi-Fi Proximity Sensing, and certified Bluetooth® for enhanced audio and seamless connections.
- Robust security features Intel® vPro™ and fTPM 2.0



reddit winner 2025

NEW NUC 15 Pro Mini PC (Tall/Slim)

NEW NUC 15 Pro Kit (Tall/Slim)

Operating System Support	Windows 11 64-bit Ubuntu 24.04 LTS 64-bit RedHat Enterprise Linux 64-bit	Windows 11 64-bit Ubuntu 24.04 LTS 64-bit RedHat Enterprise Linux 64-bit
CPU	Intel® Core™ Ultra 7 265H (vPro), Intel® Core™ Ultra 5 235H (vPro), Intel® Core™ Ultra 7 255H, Intel® Core™ Ultra 5 225H, Intel® Core™ 7 240H, Intel® Core™ 5 210H, Intel® Core™ 3 100U	Intel® Core™ Ultra 7 265H (vPro), Intel® Core™ Ultra 5 235H (vPro), Intel® Core™ Ultra 7 255H, Intel® Core™ Ultra 5 225H, Intel® Core™ 7 240H, Intel® Core™ 5 210H, Intel® Core™ 3 100U
Chipset	Integrated	Integrated
Graphics	Intel® Arc™ GPU (Core Ultra) ¹ Intel® Graphics (Core3, Core 5, Core 7)	Intel® Arc™ GPU (Core Ultra) ¹ Intel® Graphics (Core3, Core 5, Core 7)
Memory	2 x SO-DIMM, Up to DDR5-5600, 48GB*2 (Core 3, Core 5, Core 7) 2 x CSO-DIMM, Up to DDR5-6400, 48GB*2 (Core Ultra)	2 x SO-DIMM, Up to DDR5-5600, 48GB*2 (Core 3, Core 5, Core 7) 2 x CSO-DIMM, Up to DDR5-6400, 48GB*2 (Core Ultra)
Storage	1 x M.2 2280 PCIe Gen4x4, supports 128GB~2TB NVMe SSD 1 x M.2 2242 PCIe Gen4x4, supports 128GB~2TB NVMe SSD PCIe Gen 5 ready design	1 x M.2 2280 PCIe Gen4x4, supports 128GB~2TB NVMe SSD 1 x M.2 2242 PCIe Gen4x4, supports 128GB~2TB NVMe SSD *No storage installed at shipment PCIe Gen 5 ready design
Wireless Network	Intel® Wi-Fi 7 BE201 + Bluetooth 5.4 (Core Ultra) Intel® Wi-Fi 7 BE202 + Bluetooth 5.4 (Core 3, Core 5, Core 7)	Intel® Wi-Fi 7 BE201 + Bluetooth 5.4 Intel® Wi-Fi 7 BE202 + Bluetooth 5.4 (Core 3, Core 5, Core 7)
LAN	Intel® Ethernet Controller I226-V/LM, 2.5G ²	Intel® Ethernet Controller I226-V/LM, 2.5G ²
Audio	Up to 7.1 multichannel (or 8-channel) digital audio on HDMI and DP Type-C ports	Up to 7.1 multichannel (or 8-channel) digital audio on HDMI and DP Type-C ports
TPM	fTPM	fTPM
HDMI CEC	Yes, 2 ports on back panel	Yes, 2 ports on back panel
Front I/O Ports	1 x USB 3.2 Gen2x2 Type-C 2 x USB 3.2 Gen2 Type-A	1 x USB 3.2 Gen2x2 Type-C 2 x USB 3.2 Gen2 Type-A
Back I/O Ports	2 x HDMI 2.1 TMDS Compatible (4K@60Hz) 2 x Thunderbolt™ 4 ports (incl. DP 2.1 and USB4) 1 x USB 3.2 Gen2 Type-A 1 x USB Type-A 1 x RJ45 LAN 1 x DC-in	2 x HDMI 2.1 TMDS Compatible (4K@60Hz) 2 x Thunderbolt™ 4 ports (incl. DP 2.1 and USB4) 1 x USB 3.2 Gen2 Type-A 1 x USB Type-A 1 x RJ45 LAN 1 x DC-in
Side I/O Ports	1 x Kensington Lock	1 x Kensington Lock
Power Supply	Power supply adapter (120W/19VDC for Core Ultra 5, 7, Core 5, 7; 90W/19VDC for Core 3) with geo-specific AC cord (IEC C5)	Power supply adapter (120W/19VDC for Core Ultra 5, 7, Core 5, 7; 90W/19VDC for Core 3) with geo-specific AC cord (IEC C5)
Dimensions	Tall: 117mm x 112mm x 54mm Slim: 117mm x 112mm x 37mm	Tall: 117mm x 112mm x 54mm Slim: 117mm x 112mm x 37mm
Accessories	AC Adapter+Power Cord ⁴ / VESA Bracket and Screws / Cable Clip / Safety / Caution / Regulatory Insert / Warranty Card	AC Adapter+Power Cord ⁴ / VESA Bracket and Screws / Cable Clip / Safety / Caution / Regulatory Insert / Warranty Card

Everyday AI



NUC 14 Pro

Compact Power, Intelligent Performance

- Up to Intel® Core™ Ultra 7 Processor
- AI Ready for Optimal Performance
- Intel vPro® Enterprise for comprehensive security and hardware-based remote management
- Toolless Chassis Design for Easy Upgrades



Everyday AI		Everyday AI	
NUC 14 Pro Mini PC		NUC 14 Pro Kit (Barebone)	
Operating System Support	Windows 11 Pro		Support for Windows 11 *Compatible with various Linux distributions
CPU	Intel® Core™ Ultra 7 155H Processor Intel® Core™ Ultra 5 135H Processor Intel® Core™ Ultra 5 125H Processor (TDP up to 40W)		NUC14RVK Intel® Core™ Ultra 7 155H Processor Intel® Core™ Ultra 5 125H Processor Intel® Core™ 3 100U Processor (TDP up to 40W) NUC14RVH/B Intel® Core™ Ultra 7 165H Processor with vPro Intel® Core™ Ultra 7 155H Processor Intel® Core™ Ultra 5 135H Processor with vPro Intel® Core™ Ultra 5 125H Processor Intel® Core™ 3 100U Processor (TDP up to 40W)
Chipset	Integrated		Integrated
Graphics	Intel® Arc™ GPU (U7/U5), Intel® Graphics (i3) *System requires 128-bit dual channel memory for optimal performance		
Memory	Includes either 16GB or 32GB DDR5-5600MHz (depending on SKU)		2 x SO-DIMM DDR5 5600 8GB x2 Support up to 48GB x2
Storage	Includes either 512GB or 1TB M.2 PCIe Gen4x4 NVMe SSD (depending on SKU)		NUC14RVK 1 x M.2 2280 PCIe Gen4x4 NVMe SSD Slot Support 1x M.2 2242 PCIe x4 NVMe SSD Slot Support NUC14RVH 1x M.2 2280 PCIe Gen4x4 NVMe SSD Slot Support 1x M.2 2242 PCIe x4 NVMe SSD Slot Support 1x SATA 2.5in slot for SSD/HDD Support
Wireless Network	Intel® Wi-Fi 6E AX211, 2x2, and Bluetooth® 5.3 (BT version depends on OS support)		Intel® Wi-Fi 6E AX211, 2x2, and Bluetooth® 5.3 (BT version depends on OS support)
LAN	2.5G Ethernet, 10/100/1000/2500 Mbps		2.5G Ethernet, 10/100/1000/2500 Mbps
Front I/O Ports	1 x USB 3.2 Gen2x2 Type-C, 2 x USB 3.2 Gen2 Type-A, 1 x Kensington Lock		
Rear I/O Ports	2 x Thunderbolt 4 Type-C w/ DisplayPort 1.4, 1 x USB 3.2 Gen 2 Type-A, 1 x USB 2.0 Type-A, 2 x HDMI 2.1 (TMDS), 1 x RJ45 LAN, 1 x DC-in		
Dimension	Tall: 117mm x 112mm x 54mm , Slim: 117mm x 112mm x 37mm		
Weight	Tall: 750g , Slim: 600g		
Power Supply	120W Power Adapter (U5/U7), 90W Power Adapted (C3)		
Accessories	AC Adapter + Power Cord, Warranty Card, Quick Start Guide, VESA Mount Plate		
Available SKUs	<div><div>● Mini PC</div><div>● Kits</div><div>● Boards</div></div>		

NUC 14 Performance

Level Up, Intelligent Performance

- **Performance:** Top-tier Intel® Core™ Ultra 9 performance.
- **Speed:** NVIDIA® GeForce RTX™ 4070/4060 Laptop GPU.
- **Five 4K Display*:** Efficient multitasking.
- **Flexible:** Versatile stand for easy cable management.
- **AI Ready:** Utilize Intel® Core™ Ultra AI engines (GPU, NPU, CPU).

* Connect two monitors via Thunderbolt.

NUC 14 Performance 760 Kit

NUC 14 Performance 970 Kit

Processor Included	Intel® Core™ Ultra 7 Processor 155H (24MB Cache up to 4.80 GHz)	Intel® Core™ Ultra 9 Processor 185H (24MB Cache up to 5.10 GHz)
Discrete Graphics	NVIDIA® GeForce RTX™ 4060 Laptop GPU	NVIDIA® GeForce RTX™ 4070 Laptop GPU
Board Number	NUC14SRBU7A	NUC14SRBU9B
Supported Operating Systems	Windows 11 64-bit*	Windows 11 64-bit*
CPU Total Cores	16	16
CPU Total Threads	22	22
CPU Max Turbo Frequency	4.80 GHz	5.10 GHz
# of Memory Slots	2	2
Memory Types	DDR5-5600 1.1V SO-DIMM	DDR5-5600 1.1V SO-DIMM
Max # of Memory Channels	2	2
ECC Memory Supported*	No	No
Internal Drive Form Factor	M.2 SSD	M.2 SSD
# of Internal Drives Supported	3	3
Removable Memory Card Slot	SD Express PCIe G3 NVMe UHS-I	SD Express PCIe G3 NVMe UHS-I
M.2 Card Slot (storage)	3x 22x80	3x 22x80
Graphics Output	1x Thunderbolt™ 4 1x HDMI2.1 (FRL) 2x DP1.4a	1x Thunderbolt™ 4 1x HDMI2.1 (FRL) 2x DP1.4a
# of Thunderbolt™ Ports	1x rear Thunderbolt™ 4	1x rear Thunderbolt™ 4
# of USB Ports	6	6
USB Configuration	Front: 2x Type-A; Rear: 2x Type-A 3.2 Gen2 2x Type-A 2.0	Front: 2x Type-A; Rear: 2x Type-A 3.2 Gen2 2x Type-A 2.0
Audio (back channel + front channel)	7.1 digital; L+R+mic (F)	7.1 digital; L+R+mic (F)
Integrated LAN	Intel® Ethernet Controller i226-V	Intel® Ethernet Controller i226-V
Wireless Included	Intel® Killer™ Wi-Fi 6E AX1690 (i/s)	Intel® Killer™ Wi-Fi 6E AX1690 (i/s)

NUC 14 Essential

Efficient Performance. Smart Savings

- Energy-efficient performance with low-power N-series processors
- Supports triple 4K displays for effortless multitasking
- Easy access design for memory and storage upgrades



NUC 14 Essential Mini PC



NUC 14 Essential Kit



NUC 14 Essential Board



Operating System Support	Windows 11 64-bit	Windows 11 64-bit Ubuntu 24.04 LTS 64-bit RedHat Enterprise Linux 64-bit	Windows 11 64-bit Ubuntu 24.04 LTS 64-bit RedHat Enterprise Linux 64-bit
CPU	Intel® Processor N150, TDP 6W Intel® Processor N250, TDP 6W Intel® Processor Core™ 3 N355, TDP 15W Intel® Processor N97, TDP 12W	Intel® Processor N150, TDP 6W Intel® Processor N250, TDP 6W Intel® Processor Core™ 3 N355, TDP 15W Intel® Processor N97, TDP 12W	Intel® Processor N150, TDP 6W Intel® Processor N250, TDP 6W Intel® Processor Core™ 3 N355, TDP 15W Intel® Processor N97, TDP 12W
Chipset	Integrated	Integrated	Integrated
Graphics	Intel® UHD Graphics (N97) Intel® Graphics (N150, N250, N355)	Intel® UHD Graphics (N97) Intel® Graphics (N150, N250, N355)	Intel® UHD Graphics (N97) Intel® Graphics (N150, N250, N355)
Memory	1 x SO-DIMM, Up to DDR5-4800, 16GB*1	1 x SO-DIMM, Up to DDR5-4800, 16GB*1	1 x SO-DIMM, Up to DDR5-4800, 16GB*1
Storage	1 x M.2 2280/2242 PCIe Gen3x4, supports 128GB~2TB NVMe or SATA SSD	1 x M.2 2280/2242 PCIe Gen3x4, supports 128GB~2TB NVMe or SATA SSD	1 x M.2 2280/2242 PCIe Gen3x4, supports 128GB~2TB NVMe or SATA SSD
Wireless Network	Intel® Wi-Fi 6E AX211 (Gig+), Bluetooth® 5.3	Intel® Wi-Fi 6E AX211 (Gig+), Bluetooth® 5.3	None
LAN	1 x Realtek Ethernet Controller RTL8125BG-CG, 2.5G	1 x Realtek Ethernet Controller RTL8125BG-CG, 2.5G	1 x Realtek Ethernet Controller RTL8125BG-CG, 2.5G
Audio	Realtek ALC3251	Realtek ALC3251	Realtek ALC3251
TPM	fTPM or TPM 2.0 chip	fTPM or TPM 2.0 chip	fTPM or TPM 2.0 chip
HDMI CEC	Yes	Yes	Yes
Front I/O Ports	1 x USB 3.2 Gen2 Type-C 2 x USB 3.2 Gen2 Type-A 1 x 3.5mm Headset Jack	1 x USB 3.2 Gen2 Type-C 2 x USB 3.2 Gen2 Type-A 1 x 3.5mm Headset Jack	1 x USB 3.2 Gen2 Type-C 2 x USB 3.2 Gen2 Type-A 1 x 3.5mm Headset Jack
Back I/O Ports	1 x USB 3.2 Gen2 Type-C w/ DisplayPort1.4 2 x USB 3.2 Gen 2 Type-A 1 x USB 2.0 Type-A 1 x HDMI 2.1 (TMDS) 1 x DisplayPort 1.4 1 x RJ45 LAN 1 x DC-in	1 x USB 3.2 Gen2 Type-C w/ DisplayPort1.4 2 x USB 3.2 Gen 2 Type-A 1 x USB 2.0 Type-A 1 x HDMI 2.1 (TMDS) 1 x DisplayPort 1.4 1 x RJ45 LAN 1 x DC-in	1 x USB 3.2 Gen2 Type-C w/ DisplayPort1.4 2 x USB 3.2 Gen 2 Type-A 1 x USB 2.0 Type-A 1 x HDMI 2.1 (TMDS) 1 x DisplayPort 1.4 1 x RJ45 LAN 1 x DC-in
Side I/O Ports	1 x Kensington Lock	1 x Kensington Lock	1 x Kensington Lock
Power Supply	19VDC, 3.42A, 65W Power Adapter	19VDC, 3.42A, 65W Power Adapter	19VDC, 3.42A, 65W Power Adapter
Dimensions	135mm x 115mm x 36mm	135mm x 115mm x 36mm	121.6mm x 108mm x 24.64mm
Weights	480g (0.48kg)	470g (0.47kg)	182.4g (0.18kg)
Accessories	AC Adapter + Power Cord ² VESA Bracket and Screws Safety/Caution/Regulatory Insert Warranty Card	AC Adapter + Power Cord ² VESA Bracket and Screws Safety/Caution/Regulatory Insert Warranty Card	Warranty Card Safety/Caution/Regulatory Insert

NUC 13 Pro

The Right Size for Modern Business

- Sleek, attractive, and designed for display in any room
- Aluminum chassis with honeycomb vents
- Kensington lock with base security
- Tested at 32 dBA for whisper-quiet operation



	NUC 13 Pro Mini PC	NUC 13 Pro Kit	
OS Support	Windows 11 64-bit	Windows 11 64-bit Windows 10 IoT Enterprise 64-bit RedHat Enterprise Linux 9.1 64-bit Ubuntu 20.04/22.04 LTS 64-bit	
CPU	Intel® Core™ i7-1360P Processor, cTDP 40W Intel® Core™ i5-1340P Processor, cTDP 40W Intel® Core™ i3-1315U Processor, cTDP 20W	NUC13ANH-B / NUC13LCH-B Intel® Core™ i7-1370P Processor w/ vPro, cTDP 40W Intel® Core™ i7-1360P Processor, cTDP 40W Intel® Core™ i5-1350P Processor w/ vPro, cTDP 40W Intel® Core™ i5-1340P Processor, cTDP 40W Intel® Core™ i3-1315U Processor, cTDP 20W	NUC13ANK-B / NUC13LCK-B Intel® Core™ i7-1370P Processor w/ vPro, cTDP 40W Intel® Core™ i7-1370PE Processor w/ vPro, cTDP 40W Intel® Core™ i7-1360P Processor, cTDP 40W Intel® Core™ i5-1350P Processor w/ vPro, cTDP 40W Intel® Core™ i5-1350PE Processor, cTDP 40W Intel® Core™ i5-1340P Processor, cTDP 40W Intel® Core™ i5-1340PE Processor w/ vPro, cTDP 40W Intel® Core™ i3-1315U Processor, cTDP 20W Intel® Core™ i3-1315UE Processor, cTDP 20W
Chipset	Integrated		
Graphics	Intel® Iris® Xe Graphics (i5/i7), Intel® UHD Graphics (i3)		
Memory	2 x SO-DIMM, Up to DDR4-3200, 32GB*2		
Storage	1 x M.2 2280 PCIe Gen4x4, supports 128GB~8TB NVMe™ SSD 1 x 2.5" SATA 6Gb/s, supports 4TB 7~15mm HDD 1 x SATA Power/DATA header for 2.5in SSD/HDD, supports 128GB~2TB SATA drive	NUC13ANH-B / NUC13LCH-B 1 x M.2 2280 PCIe Gen4x4, supports 128GB~8TB NVMe™ SSD 1 x M.2 2242 PCIe, supports 128GB~1TB SATA SSD 1 x 2.5" SATA 6Gb/s, supports 4TB 7~15mm HDD	NUC13ANK-B / NUC13LCK-B 1 x M.2 2280 PCIe Gen4x4, supports 128GB~8TB NVMe™ SSD 1 x M.2 2242 PCIe, supports 128GB~1TB SATA SSD 1 x SATA Power/DATA header for 2.5in SSD/HDD, supports 128GB~2TB SATA drive
Wireless Network	Intel® AX211 (Gig+), Wi-Fi 6E, Bluetooth 5.3	Intel® AX211 (Gig+), Wi-Fi 6E, Bluetooth 5.3 Intel® vPro® Technology (i7/i5 vPro SKUs only)	
LAN	Intel® Ethernet Controller I226-V, 2.5G	1 x Realtek Ethernet Controller RTL8125BG-CG, 2.5G	
Audio	Realtek ALC269		
TPM	fTPM or TPM 2.0 chip		
Card Reader	None		
HDMI CEC	Yes, 2 ports on back panel		
Front I/O Ports	2 x USB 3.2 Gen2 Type-A, 1 x 3.5mm Headset Jack		
Back I/O Ports	2 x Thunderbolt 4 Type-C w/ DisplayPort 1.4, 1 x USB 3.2 Gen 2 Type-A, 1 x USB 2.0 Type-A, 2 x HDMI 2.1 (TMDS), 1 x RJ45 LAN, 1 x DC-in		
Side I/O Ports	1 x Kensington Lock slot		
Power Supply	19VDC, 4.74A, 90W Power Adapter (i3 CPU), 20VDC, 6.0A, 120W Power Adapter (i7/i5 CPU)		
Dimensions	Tall: 117 x 112 x 54 mm, Slim: 117 x 112 x 37 mm		
Weights	Tall: ~610g , Slim: ~502 g		
Accessories	AC Adapter+Power Cord*, VESA Bracket and Screws, M3 Screws for 2.5in Drive (Tall Chassis Only), Cable Clip, Safety/Caution/Regulatory Insert, Warranty Card*Power cord included is region specific, and some SKUs do not include the power cord		
Available SKUs	 Mini PC	 Kits	 Boards

AI Enabled



ExpertCenter PN65



ExpertCenter PN64-E1



ExpertCenter PN64

Operating System Support	Windows®11 Pro 64Bit, Windows®11 64Bit W/O OS	Windows®11 Pro 64bit Windows®11 64bit W/O OS	Windows®11 Pro 64bit Windows®11 64bit W/O OS
CPU	Intel® Core™ U7-155H processor, (cTDP 35W) Intel® Core™ U5-125H processor, (cTDP 35W)	Intel® Core™ i7-13700H Processor (cTDP 35W) Intel® Core™ i5-13500H Processor (cTDP 35W) Intel® Core™ i7-13800H Processor, vPro support (cTDP 35W) Intel® Core™ i5-13600H Processor, vPro support (cTDP 35W)	Intel® Core™ i7-13700H Processor (cTDP 35W) Intel® Core™ i5-13500H Processor (cTDP 35W) Intel® Core™ i7-12700H Processor (cTDP 35W) Intel® Core™ i5-12500H Processor (cTDP 35W) Intel® Core™ i3-1220P Processor (cTDP 28W)
Chipset	Integrated	Integrated	Integrated
Graphics	Integrated - Intel® Arc™ Graphics	Integrated - Intel® Iris® Xe Graphics	Integrated - Intel® Iris® Xe Graphics (i5/i7 CPU) Integrated - Intel® UHD Graphics (i3 CPU)
Memory	2 x SO-DIMM, DDR5-5600MHz memory, up to 48G*2	2 x SO-DIMM, DDR5-4800MHz memory, up to 32GB*2	2 x SO-DIMM , DDR5-4800MHz memory, up to 32GB*2* *32GB memory support only on 13th Gen CPU
Storage	2 x M.2 2280 PCIe Gen4x4, supports 256G~2TB NVMe™ SSD 1 x 2.5" SATA 6Gb/s, supports 1TB~2TB 7200rpm 7mm HDD	2 x M.2 2280 PCIe Gen4x4, supports 256GB~2TB NVMe™ SSD 1 x 2.5" SATA 6Gb/s, supports 1TB 7200rpm 7mm HDD	1 x M.2 2280 PCIe Gen4x4, supports 256GB~2TB NVMe™ SSD 1 x 2.5" SATA 6Gb/s, supports 1TB 7200rpm 7mm HDD
Wireless Network	Intel® AX211 (Gig+), Wi-Fi 6E, Bluetooth 5.3, 2*2 Intel® AX201 (Gig+), Wi-Fi 6, Bluetooth 5.2, 2*2 Intel® BE200 (Gig+), Wi-Fi 7, Bluetooth 5.4, 2*2 * Although PN65 supports Wi-Fi 7, most regions currently lack related regulations and routers. Please refrain from configuring PN65 with Wi-Fi 7, except in the United States and Japan.	Intel® AX210 (Gig+), Wi-Fi 6E, Bluetooth 5.3, 2*2 Intel® AX201 (Gig+), Wi-Fi 6, Bluetooth 5.2, 2*2 Intel® AX211 (Gig+), Wi-Fi 6E, Bluetooth 5.3, 2*2, vPro support * Bluetooth version support may vary from OS. Bluetooth v5.2 function will be ready in Windows 11 or later.	Intel® AX211 (Gig+), Wi-Fi 6E, Bluetooth 5.3, 2*2 Intel® AX210 (Gig+), Wi-Fi 6E, Bluetooth 5.3, 2*2 Mediatek MT7922A22M, Wi-Fi 6E, Bluetooth 5.4, 2*2 Intel® AX201 (Gig+), Wi-Fi 6, Bluetooth 5.2, 2*2 * Bluetooth version support may vary from OS. Bluetooth v5.2 function will be ready in Windows 11 or later.
LAN	1 x Intel® I225V, 2.5G LAN	1 x Intel® I226V, 2.5G LAN, or Intel® I226LM, 2.5G LAN, vPro support 1 x Intel® I225V, 2.5G LAN (Config. Port)	1 x Intel® I225V, 2.5G LAN 1 x Intel® I225V, 2.5G LAN (Config. Port)
TPM	fTPM 2.0 or TPM 2.0 chip (Optional)	fTPM 2.0 or TPM 2.0 chip (Optional)	fTPM 2.0 or TPM 2.0 chip (Optional)
Front I/O Ports	1 x USB 3.2 Gen2 Type-C 2 x USB 3.2 Gen2 Type-A 1 x Audio Jack (Line In/Mic In/Headphone/ Speaker Out/Headset) 1 x RGB Indicator	1 x Thunderbolt™ 4 2 x USB 3.2 Gen2 Type-A 1 x Audio Jack (Line out/Mic in/Headphone out)	1 x USB 3.2 Gen2 Type-C 2 x USB 3.2 Gen2 Type-A 1 x Audio Jack (Line out/Mic in/Headphone out)
Side I/O Ports	1 x Kensington Lock slot	1 x Kensington Lock slot	1 x Kensington Lock slot
Rear I/O Ports	1 x USB 3.2 Gen2 Type-C (with DP1.4/PD-in*) 1 x USB 3.2 Gen2 Type-A 2 x USB 2.0 2 x HDMI (Up to 4K@60Hz) 1 x 2.5G RJ45 LAN 1 x Configurable (options: HDMI*/DP1.4/COM/VGA/2.5G LAN) 1 x DC-in 1 x Padlock ring *Supports up to 4 display simultaneously *Configurable HDMI2.1 support up to 4K@60Hz *Power supply device need to support Power Delivery & at least 100W output *The lateral HDMI port supports CEC	1 x Thunderbolt™ 4 (with PD-in*) 1 x USB 3.2 Gen2 Type-A 2 x USB 3.2 Gen1 Type-A 2 x HDMI (Up to 4K@60Hz) 1 x Configurable (options: HDMI*/DP1.4/COM/VGA/2.5G LAN) 1 x 2.5G RJ45 LAN 1 x Padlock ring 1 x DC-in *Supports up to 4 display simultaneously *Configurable HDMI2.1 support up to 8K@30Hz *Power supply device need to support Power Delivery & at least 100W output *The lateral HDMI port supports CEC	1 x USB 3.2 Gen2 Type-C (with DP1.4/PD-in*) 1 x USB 3.2 Gen2 Type-A 2x HDMI (Up to 4K@60Hz) 1 x Configurable (options: HDMI*/DP1.4/COM/VGA/2.5G LAN) 1 x 2.5G RJ45 LAN 1 x DC-in *Supports up to 4 display simultaneously *Configurable HDMI2.1 support up to 8K@60Hz *Power supply device need to support Power Delivery & at least 100W output *The lateral HDMI port supports CEC
Dimension	120 x 130 x 58 mm (0.9L)	120 x 130x 58 mm (0.9L)	120 x 130x 58 mm (0.9L)
Weight	0.75 kg (barebone)	0.75 kg (barebone)	0.75 kg (barebone)
Power Supply	20Vdc, 6.0A 120W Power Adapter	20Vdc/19Vdc, 6.0A/6.32A 120W Power Adapter	20Vdc/19Vdc, 6.0A/6.32A 120W Power Adapter (i7/i5 CPU) 19.5Vdc/19Vdc, 4.62A/4.74A 90W Power Adapter (i3 CPU)
Accessories	Warranty Card, AC Adapter, Power Cord, VESA Mount (Optional), WiFi Antenna (Internal Antenna)	Warranty Card, AC Adapter, Power Cord, VESA Mount (Optional), WiFi Antenna (Internal Antenna)	Warranty Card, AC Adapter, Power Cord, VESA Mount (Optional), WiFi Antenna (Internal Antenna)
Available SKUs	● Mini PC ● Kits ○ Boards	● Mini PC ● Kits ○ Boards	● Mini PC ● Kits ○ Boards

Compact and Quiet for Business Everywhere



Supports up to
three displays



Extensive connectivity
with **seven USB ports**



Silent with
fanless design



Tool-free
PCIe M.2 SSD installation



PN43 series



PN42 series

Operating System Support	Windows®11 Pro 64Bit Windows®11 64Bit W/O OS	Windows®11 Pro 64bit Windows®11 64bit Windows®10 Pro 64bit
CPU	Intel® Processor N100 (cTDP 6W) Intel® Processor N200 (cTDP 6W) Intel® Processor N97 (cTDP 12W)	Intel® Processor N100 (cTDP 6W) Intel® Processor N200 (cTDP 6W) Intel® Celeron® N4500 Processor (cTDP 6W)
Chipset	Integrated	Integrated
Graphics	Integrated - Intel® UHD Graphics	Integrated - Intel® UHD Graphics
Memory	1 x SO-DIMM, DDR4-3200MHz memory, up to 32GB	1 x SO-DIMM, DDR4-3200MHz memory, up to 16GB (N200/N100) 2 x SO-DIMM, DDR4-2933MHz memory, up to 16GB*2 (N4500)
Storage	1 x M.2 2280 PCIe Gen4x4, supports 128G~2TB NVMe™ SSD	1 x M.2 2280 PCIe Gen3x4, supports 128GB~2TB NVMe™ SSD
Wireless Network	Intel® AX211 (Gig+), Wi-Fi 6E, Bluetooth 5.3, 2*2 Intel® AX201 (Gig+), Wi-Fi 6, Bluetooth 5.2, 2*2 * Bluetooth v5.2 function will be ready in Windows 11 or later.	Intel® AX211 (Gig+), Wi-Fi 6E, Bluetooth 5.3, 2*2 (N200/N100) Intel® AX201 (Gig+), Wi-Fi 6, Bluetooth 5.2, 2*2 (N200/N100/ N4500) * Bluetooth version support may vary from OS. Bluetooth v5.2 function will be ready in Windows 11 or later.
LAN	1 x Realtek® RTL8125B-CG, 2.5G LAN 1 x Realtek® RTL8125B-CG, 2.5G LAN (Optional)	1 x Realtek® RTL8125B-CG, 2.5G LAN 1 x Realtek® RTL8125B-CG, 2.5G LAN (Optional)
TPM	fTPM 2.0 or TPM 2.0 chip (Optional)	fTPM 2.0 or TPM 2.0 chip (Optional)
Front I/O Ports	4 x USB 3.2 Gen2 Type-A 1 x Mic in 1 x Audio Jack (Line out/Mic in/Headphone out)	2 x USB 3.2 Gen2 Type-A 1 x Mic in 1 x Audio Jack (Line out/Mic in/Headphone out) 1 x IR receiver
Side I/O Ports	1 x Kensington lock slot	N/A
Rear I/O Ports	1 x 2.5G RJ45 LAN 1 x 2.5G RJ45 LAN (optional) 3 x USB 2.0 (5V/0.5A) 1 x HDMI (Up to 4K@60Hz) 1 x DisplayPort 1.4 1 x DC-in 1 x Configurable (options: HDMI/DP1.4/COM/VGA/Type-C 3.2 Gen2 with DP1.4)	2 x USB 3.2 Gen1 Type-A 3 x USB 2.0 1 x DisplayPort 1.4 1 x HDMI (Up to 4K@60Hz) 1 x Configurable (options: HDMI/DP1.4/COM/VGA/Type-C 3.2 Gen2 with DP1.4) (N100/N200) 1 x Configurable (options: HDMI/DP1.4/COM/VGA) (N4500) 1 x 2.5G RJ45 LAN 1 x 2.5G RJ45 LAN (optional) 1 x Kensington Lock slot 1 x Padlock ring 1 x DC-in
Dimension / Weight	166.2 x 119.7 x 33.9 mm (0.67L) / 0.7 kg (barebone)	127.5 x 132 x 57.6 mm (0.97L) / 0.84 kg(barebone)
Power Supply	19Vdc, 3.42A 65W Power Adapter	19Vdc, 3.42A 65W Power Adapter
Accessories	AC Adapter+Power Cord, Warranty Card, Quick Start Guide, VESA Mount (Optional), Keyboard+Mouse (Optional), Screw Pack (For Barebone sku), SDVD (For W/O OS sku)	Warranty Card, AC Adapter, Power Cord, VESA Mount (optional), WiFi Antenna (Internal Antenna)

Available SKUs ● Mini PC ● Kits ● Boards

● Mini PC ● Kits ● Boards

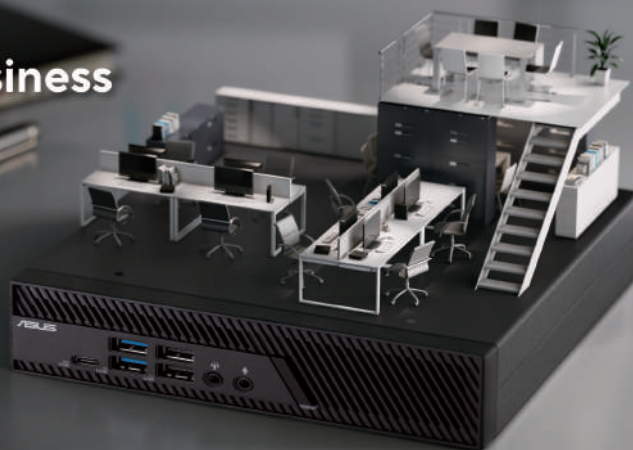
ASUS ExpertCenter PB63

Solid reliability for your business

- Powered by 14 Gen Intel® Core™ processors
- PCIe Gen4 SSD
- Dual display port, 8 USB ports, configurable port design plus triple storage design
- Optional Stackable modules*
- 24/7 reliability test to ensure stable operation

*Optional stackable module availability may vary by model or region

*I/O port options may vary by model or region



ASUS ExpertCenter PB63

Operating System Support	Windows®11 Pro 64bit Windows®11 64bit W/O OS	
CPU	Intel Core i7-14700 Processor (cTDP 65W) Intel Core i5-14600 Processor (cTDP 65W) Intel Core i5-14500 Processor (cTDP 65W) Intel Core i5-14400 Processor (cTDP 65W) Intel Core i3-14100 Processor (cTDP 60W) Intel Processor 300 (cTDP 46W)	Intel Pentium Gold G7400 Processor (cTDP 46W) Intel Celeron G6900 Processor (cTDP 46W)
Chipset	Intel® B760 Chipset	
Graphics	Integrated - Intel® UHD Graphics	
Memory	2 x SO-DIMM, DDR5-4800/5600*MHz memory, up to 32GB*2 *5600MHz only support on i7 SKUs with single-rank memory.	
Storage	2 x M.2 2280 PCIe Gen4x4, supports 256GB~2TB NVMe™ SSD	
Wireless Network	Intel® AX201 (Gig+), Wi-Fi 6, Bluetooth 5.2, 2*2 Intel® AX211 (Gig+), Wi-Fi 6E, Bluetooth 5.3, 2*2 * Bluetooth version support may vary from OS. Bluetooth v5.2 function will be ready in Windows 11 or later.	
LAN	1 x Intel® I219V, Gb LAN 1 x Intel® I225V, 2.5Gb LAN (Config. Port)	
TPM	fTPM 2.0 or TPM 2.0 chip (Optional)	
Front I/O Ports	1 x USB 3.2 Gen2 Type-C, 2 x USB 3.2 Gen1 Type-A, 2 x USB 2.0, 1 x Mic in, 1 x Audio Jack (Line out/Mic in/Headphone out)	
Side I/O Ports	N/A	
Rear I/O Ports	2 x USB 3.2 Gen1 Type-A, 1 x USB 2.0, 2 x DisplayPort 1.4 1 x Configurable (options: HDMI*/DP1.2/COM/VGA/2.5GLAN) 1 x RJ45 LAN, 1 x Kensington Lock slot, 1 x Padlock ring, 1 x DC-in * Supports up to 3 display simultaneously * Configurable HDMI2.1 support up to 4K@60Hz	
Dimension / Weight	175 x 175 x 44.2 mm / 1.14KG (barebone)	
Power Supply	20Vdc, 7.5A 150W Power Adapter (60-65W CPU) 20Vdc, 6.0A 120W Power Adapter (46W CPU)	
Accessories	Integrated Speaker (Optional), Warranty Card, AC Adapter, Power Cord, VESA Mount (Optional), WiFi Antenna (Internal Antenna)	
Available SKUs	<input checked="" type="radio"/> Mini PC <input checked="" type="radio"/> Kits <input type="radio"/> Boards	

For Prosumer

Performance Meets Beauty

Power meets style with this mini PC, featuring a stylish design to elevate any workspace.

Ultra-small size, Ultra-stylish design

Combining powerful performance, ultra-small size, and a new, stylish chassis for a proud top-of-desk display.



Powerful Performance

Experience the advanced power and performance for edge computing, collaboration, home offices, and more.



Mini PC Max Style

With its sophisticated, striking silver-and-white design, it is built for a proud, top-of-desk display in both businesses and home offices.



Ready to Work

Business-class features include remote power control, hardware alarm clock, hardware KVM, boot redirection, beyond firewall support, cloud-based manageability, remote PC remedy, and unattended system control.



Comfort and Collaboration

For comfort and collaboration, the systems offer whisper-quiet operation at just 32 dBA, plus AI features including noise cancellation, lighting correction, and background blur.



Everyday AI

NUC 15 Pro+

Unleash Ultra Power. Embrace Elegance

- Up to Intel® Core™ Ultra 9 processor with 99 TOPS for seamless operations.
- Ultra-Quiet Cooling featuring advanced cooling techniques.
- Ultra-fast connections with Intel® Wi-Fi 7, Wi-Fi Proximity Sensing, and Bluetooth® 5.4.
- Housed in a 0.7L chassis with a toolless upgrade system for sleek aesthetics and customization.



NUC 15 Pro+ Mini-PC

NUC 15 Pro+ Kit

Operating System Support	Windows 11 64-bit	Windows 11 64-bit / Ubuntu 24.04 LTS 64bit / RedHat Enterprise Linux 64-bit *No OS installed at shipment
CPU	Intel® Core™ Ultra 9 Processor 285H Intel® Core™ Ultra 7 Processor 265H (vPro) Intel® Core™ Ultra 5 Processor 235H (vPro) Intel® Core™ Ultra Processor 7 255H Intel® Core™ Ultra Processor 5 225H	Intel® Core™ Ultra 9 Processor 285H Intel® Core™ Ultra 7 Processor 265H (vPro) Intel® Core™ Ultra 5 Processor 235H (vPro) Intel® Core™ Ultra Processor 7 255H Intel® Core™ Ultra Processor 5 225H
Chipset	Integrated	Integrated
Graphics	Intel® Arc™ GPU ¹	Intel® Arc™ GPU ¹
Memory	2 x SO-DIMM, Up to DDR5-6400, 48GB*2	2 x SO-DIMM, Up to DDR5-6400, 48GB*2 *No memory installed at shipment
Storage	1 x M.2 2280 PCIe Gen4x4, supports 128GB~2TB NVMe SSD 1 x M.2 2242 PCIe Gen4x4, supports 128GB~2TB NVMe SSD PCIe Gen 5 ready design	1 x M.2 2280 PCIe Gen4x4, supports 128GB~2TB NVMe SSD 1 x M.2 2242 PCIe Gen4x4, supports 128GB~2TB NVMe SSD *No storage installed at shipment
Wireless Network	Intel® Wi-Fi 7 BE201 + Bluetooth 5.4	Intel® Wi-Fi 7 BE201 + Bluetooth 5.4
LAN	Intel® Ethernet Controller I226-V/LM, 2.5G ²	Intel® Ethernet Controller I226-V/LM, 2.5G ²
Audio	Up to 7.1 multichannel (or 8-channel) digital audio on HDMI and DP Type-C ports	Up to 7.1 multichannel (or 8-channel) digital audio on HDMI and DP Type-C ports
HDMI CEC	Yes, 2 ports on back panel	Yes, 2 ports on back panel
Front I/O Ports	1 x USB 3.2 Gen2x2 Type-C 2 x USB 3.2 Gen2 Type-A	1 x USB 3.2 Gen2x2 Type-C 2 x USB 3.2 Gen2 Type-A
Back I/O Ports	2 x HDMI 2.1 TMDS Compatible (4K@60Hz) 2 x Thunderbolt™ 4 ports (incl. DP 2.1 and USB4) 1x USB 3.2 Gen2 Type-A 1x USB Type-A 1 x RJ45 LAN 1 x DC-in 1 x Kensington Lock	2 x HDMI 2.1 TMDS Compatible (4K@60Hz) 2 x Thunderbolt™ 4 ports (incl. DP 2.1 and USB4) 1x USB 3.2 Gen2 Type-A 1x USB Type-A 1 x RJ45 LAN 1 x DC-in 1 x Kensington Lock
Power Supply	19.5VDC, 7.69A, 150W Power Adapter (Core Ultra 9) 19VDC, 6.32A, 120W Power Adapter (Core Ultra 5/7)	19.5VDC, 7.69A, 150W Power Adapter (Core Ultra 9) 19VDC, 6.32A, 120W Power Adapter (Core Ultra 5/7)
Dimensions	144mm x 112mm x 42mm	144mm x 112mm x 42mm
Weights	600g	600g
Accessories	AC Adapter + Power Cord ⁴ VESA Bracket and Screws Safety/Caution/Regulatory Insert Warranty Card	AC Adapter + Power Cord ⁴ VESA Bracket and Screws Safety/Caution/Regulatory Insert Warranty Card
Available SKUs	Mini PC	Kits Boards

NUC 14 Pro+

A new, eye-catching chassis for a top-of-desk display

- **Performance:** Superior performance besting all other competitive mini-PCs
- **Design:** Features an eye-catching 5 x 4-inch anodized aluminum chassis
- **AI Ready:** Harnesses the prowess of the Intel® Core™ Ultra 9 processor to locally run generative AI workloads
- **Wi-Fi Sensing:** Takes advantage of Wi-Fi sensing to deliver instant availability while reducing power consumption
- **Wireless Connectivity:** Delivers seamless connectivity for certified Bluetooth® dongle-free experiences
- **Customizable:** Designed for toolless chassis access making upgrades easier, safer, and faster



	NUC 14 Pro+ Mini PC	NUC 14 Pro+ Kit
Operating System Support	Windows 11 64-bit *Compatible with various Linux distributions	Ubuntu 24.04 LTS 64-bit RedHat Enterprise Linux 64-bit
CPU	Intel® Core™ Ultra 9 185H Processor Intel® Core™ Ultra 7 155H Processor Intel® Core™ Ultra 5 125H Processor (TDP up to 65W)	Intel® Core™ Ultra 7 Processor 155H, cTDP 40W Intel® Core™ Ultra 9 Processor 185H, cTDP 65W Intel® Core™ Ultra 5 Processor 125H, cTDP 40W Intel® Core™ Ultra 7 Processor 165H w/ vPro, cTDP 40W Intel® Core™ Ultra 5 Processor 135H w/ vPro, cTDP 40W
Chipset	Integrated	Integrated
Graphics	Intel® Arc™ GPU	Intel® Arc™ GPU
Memory	2 x SO-DIMM DDR5 5600 8GB x2 or 16GB x2 Support up to 48GB x2	2 x SO-DIMM DDR5 5600 8GB x2 or 16GB x2 Support up to 48GB x2
Storage	1 x M.2 2280 PCIe Gen4x4 NVMe 512GB or 1TB SSD *1x M.2 2242 PCIe x4 NVMe SSD Slot for add-on card	1 x M.2 2280 PCIe Gen4x4 NVMe 512GB or 1TB SSD *1x M.2 2242 PCIe x4 NVMe SSD Slot for add-on card
Wireless Network	Intel® Wi-Fi 6E AX211, 2x2, and Bluetooth® 5.3 (BT version depends on OS support)	Intel® Wi-Fi 6E AX211, 2x2, and Bluetooth® 5.3 (BT version depends on OS support)
LAN	2.5G Ethernet, 10/100/1000/2500 Mbps	2.5G Ethernet, 10/100/1000/2500 Mbps
Front I/O Ports	1 x USB 3.2 Gen2x2 Type C 2 x USB 3.2 Gen2 Type A	1 x USB 3.2 Gen2x2 Type C 2 x USB 3.2 Gen2 Type A
Side I/O Ports	N/A	N/A
Rear I/O Ports	2 x Thunderbolt 4 Type-C Ports 1 x USB 3.2 Gen 2 Type-A 1 x 2.0 Type-A 2 x HDMI 2.1 (TMDS) ports 1 x RJ45 LAN Port 1 x DC-in 1 x Kensington Lock	2 x Thunderbolt 4 Type-C Ports 1 x USB 3.2 Gen 2 Type-A 1 x 2.0 Type-A 2 x HDMI 2.1 (TMDS) ports 1 x RJ45 LAN Port 1 x DC-in 1 x Kensington Lock
Dimension	144mm x 112mm x 41mm	144mm x 112mm x 41mm
Weight	800g	800g
Power Supply	150W Power Adapter (U9) 120W Power Adapter (U5/U7)	150W Power Adapter (U9) 120W Power Adapter (U5/U7)
Accessories	AC Adapter+Power Cord Warranty Card Quick Start Guide VESA Mount Keyboard+Mouse (Optional) VESA Mount plate	AC Adapter+Power Cord Warranty Card Quick Start Guide VESA Mount Keyboard+Mouse (Optional) VESA Mount plate

Available SKUs

● Mini PC

● Kits

● Boards

For Edge Computing

Around the Clock Reliability

NUC Pro, Essential, Rugged, ExpertCenter Mini PC and PL series, give edge compute solutions with full-size PC power in a small form factor.

What is Edge Compute?

Edge computing is a growing industry initiative to bring compute, storage, and connectivity capabilities closer to the user. This leads to lower latency, with a higher, more efficient use of bandwidth and better security capabilities.

Why Use a Mini PC as Your Edge Compute Device?

The NUC Pro, Essential, Rugged and ExpertCenter Mini PC, and PL models encapsulate the capabilities of modern full-size desktop PCs within a compact form factor that fits in the palm of your hand. Serving as edge computing devices, they cater to diverse applications such as kiosks, multi-display setups, meeting rooms, telehealth, and robotics. These ASUS Mini PCs are purposefully designed to withstand continuous commercial use around the clock, ensuring a dependable foundation for your edge computing solution.



Stand-alone Digital Signage

ASUS NUC and Mini PC series offers commercial-grade reliability and performance for your digital signage applications. Stream 4K video to multiple displays, digitize menu boards and lobby signs, and support other visual solutions. Additionally, the series can support interactive screens and sales transactions in the future.



Video Wall

Ensure a strong, flexible foundation for multiscreen, high-impact installations. A single Mini PC has multiple 4K video channel outputs through HDMI and Thunderbolt™ technology. Just one device can drive multiple displays as a unified monitor or feed each screen a different stream.



Kiosk

Kiosks demand more than a simple digital signage player. Today's self-service kiosks let people check in at hotels, check inventory across stores, and find directions. This requires more processing power for interactive touchscreens and imaging. ASUS NUC and Mini PC deliver this performance in a range of form factors that streamline design and manufacturing.

NUC 13 Rugged

Breakthrough Performance in the Harshest Environments



NUC 13 Rugged-Slim

NUC 13 Rugged-Tall

Operating System Support	Windows 11*	Without OS
CPU	Intel® Processor N50 (TDP 6W)	Intel® Atom® x7211E Intel® Atom® x7425E(TDP 6W/12W)
Chipset	Integrated	Integrated
Graphics	Intel® UHD Graphics Technology	Intel® UHD Graphics Technology
Memory	1 x SO-DIMMDDR5 4800 MT/s memory 8GB~16GBoptional "in-band" ECC support (select models only)	1 x SO-DIMMDDR5 4800 MT/s memory 8GB~16GBoptional "in-band" ECC support (select models only)
Storage	64GB eMMC soldered-down 1x M.2 2280 slot PCIe x2 NVMe SSD 1x M.2 3042 Slot (SATA SSD/PCI x1/USB3.2 Gen2)	64GB eMMC soldered-down 1x M.2 2280 slot PCIe x2 NVMe SSD 1x M.2 3042 Slot (SATA SSD/PCI x1/USB3.2 Gen2)
Wireless Network	Intel® Wi-Fi 6E AX210 (External Antenna) + Bluetooth® v5.3	Intel® Wi-Fi 6E AX210 (External Antenna) + Bluetooth® v5.3
LAN	Dual 2.5G Ethernet, 10/100/1000/2500 Mbps	Dual 2.5G Ethernet, 10/100/1000/2500 Mbps
Side I/O	1 x Kensington Lock	1 x Kensington Lock
Rear I/O differences	2 x USB 3.2 Gen1 Type A (rear panel) 2 x USB 2.0 Type A (rear panel) 2 x USB 2.0 Headers (internal) 2 x HDMI 2.1 TMDs Ports with Built-In CEC Support 2 x 4K@60Hz display or 2 x 1080@60Hz (2 x HDMI 2.1 TMDs) 2 x RJ45 LAN Port 1 x DC-in	2 x USB 3.2 Gen1 Type A (rear panel) 2 x USB 2.0 Type A (rear panel) 2 x USB 2.0 Headers (internal) 2 x HDMI 2.1 TMDs Ports with Built-In CEC Support 2 x 4K@60Hz display or 2 x 1080@60Hz (2 x HDMI 2.1 TMDs) 2 x RJ45 LAN Port 1 x DC-in
Power Supply	65W Power Adapter	90W Power Adapter
Operating Temp	0 to 40C	0 to 40C
Dimension	174 x 108 x 25.9H mm (internal heatsink) [H: +3.4mm rubber feet]	174 x 108 x 35.8H mm (external heatsink)[H: +3.4mm rubber feet]
Accessories	AC Adapter+Power Cord Warranty Card Quick Start Guide VESA Mount Keyboard+Mouse (Optional)	AC Adapter+Power Cord Warranty Card Quick Start Guide VESA Mount Keyboard+Mouse (Optional)
Available SKUs	○ Mini PC ● Kits ● Boards	○ Mini PC ● Kits ● Boards

Introducing ASUS PL Series Mini PCs

ASUS PL series mini PCs are designed mainly for indoor industrial applications. PL series mini PCs are subjected to strict testing standards, offer legacy connectivity and long product life cycles to cater to a diverse range of uses.



Digital Signage

- Compact 200 x 120 x 34 mm dimensions, ideal for digital signage
- Stunning 4K resolution output Triple display support via HDMI
- EDID emulation: Ensures video output is suitable for the display
- Virtual display: Efficient remote device management without a monitor



Kiosk & Store OA

- Dual COM ports with RS-232/422/485 support with easy driver setup
- Dual LAN with one 2.5 GbE port
- Designed to operate at up to 50°C ambient temperature
- Compact metal chassis offers versatile mounting options to suit various needs
- Reliable fanless design



IoT Control Unit

- Powerful computing performance with up to 12th Gen Intel® Core™ i7 processors (15 W)
- Reliable fanless design
- Virtual display: Remote management for headless systems
- Dual LAN ports with one 2.5 GbE LAN
- WiFi 6E for stable, high-speed data transfers
- Stringently tested to ensure 24/7 reliability
- Versatile mounting options to suit various needs

Advanced Output Management EDID Emulation

Mini PC PL64 features Extended Display Identification Data (EDID) emulation and retains signage format so content being displayed remains unaffected even in the event of a temporary loss of power or connectivity issues, making it ideal for digital.

Original

(Without EDID Emulation Function)
The content may be broken



Once a monitor is disconnected

Enable EDID emulation

The content is retained, once you reconnect the display, you can get it back and final



Virtual Display

PL64 can create virtual screens without a connected display. Virtual Display technology provides access to the system via a remote desktop, without affecting content that's currently being displayed, allowing an administrator to manage the system offsite.



ASUS Mini PC PL64 Series

Compact, Fanless, Reliable

Built for Indoor Industrial Applications

- Powered by 12th Gen Intel® Core™ processors
- Fan-less design for 15-watt CPU while minimizing noise and dust ingress
- Up to 3 x PoE ports with IEEE 802.3at(30W) standard support
- Triple-display support via HDMI with EDID emulation and virtual display
- Dual LAN, dual COM ports, PCIe® Gen 4 SSD, WiFi 6E, 50°C operational ambient temperature



PL64-D1

PL64

Operating System Support	Windows®11 Pro 64bit Windows®11 64bit W/O OS	Windows®11 Pro 64bit Windows®11 64bit W/O OS
CPU	Intel® Core™ i7-1255U Processor (cTDP 15W) Intel® Core™ i5-1235U Processor (cTDP 15W) Intel® Core™ i3-1215U Processor (cTDP 15W) Intel® Celeron® 7305 Processor (cTDP 15W)	Intel® Core™ i7-1255U Processor (cTDP 15W) Intel® Core™ i5-1235U Processor (cTDP 15W) Intel® Core™ i3-1215U Processor (cTDP 15W) Intel® Celeron® 7305 Processor (cTDP 15W)
Chipset	Integrated	Integrated
Graphics	Integrated - Intel® Iris® Xe Graphics (i5/i7 CPU) Integrated - Intel® UHD Graphics (i3/Celeron® CPU)	Integrated - Intel® Iris® Xe Graphics (i5/i7 CPU) Integrated - Intel® UHD Graphics (i3/ Celeron® CPU)
Memory	2 x SO-DIMM, DDR4-3200MHz memory, up to 32GB*2	2 x SO-DIMM, DDR4-3200MHz memory, up to 32GB*2
Storage	2 x M.2 2280 PCIe Gen4x4, supports 256GB~2TB NVMe™ SSD	2 x M.2 2280 PCIe Gen4x4, supports 256GB~2TB NVMe™ SSD
Wireless Network	Intel® AX211 (Gig+), Wi-Fi 6E, Bluetooth 5.3, 2*2 Intel® AX201 (Gig+), Wi-Fi 6, Bluetooth 5.2, 2*2 * Bluetooth version support may vary from OS. Bluetooth v5.2 function will be ready in Windows 11 or later.	Intel® AX211 (Gig+), Wi-Fi 6E, Bluetooth 5.3, 2*2 Intel® AX201 (Gig+), Wi-Fi 6, Bluetooth 5.2, 2*2 * Bluetooth version support may vary from OS. Bluetooth v5.2 function will be ready in Windows 11 or later.
LAN	3 x Intel® I225V, 2.5G LAN	Intel® I225V LAN, 2.5G LAN Intel® I219V LAN, Gb LAN
TPM	fTPM 2.0 or TPM 2.0 chip (Optional)	fTPM 2.0 or TPM 2.0 chip (Optional)
Front I/O Ports	3 x USB 3.2 Gen2 Type-A, 2 x USB 2.0, 1 x PoE port 1 x Audio Jack (Line out/Mic in/Headphone out)	3 x USB 3.2 Gen2 Type-A 2 x COM (RJ50; support RS232, 422, 485) 1 x Audio Jack (Line out/Mic in/Headphone out)
Side I/O Ports	1 x USB 3.2 Gen1 Type-A 1 x Kensington Lock slot	2 x USB 3.2 Gen1 Type-A 1 x Kensington Lock slot
Rear I/O Ports	3 x HDMI 2.1 (Up to 4K@60Hz), 2 x PoE port, 1 x EDID reset, 2 x Antenna Jack, 1 x DC-in, * Supports up to 3 display simultaneously Power	3 x HDMI 2.1 (Up to 4K@60Hz), 1 x 2.5G RJ45 LAN, 1 x RJ45 LAN, 1 x EDID reset, 2 x Antenna Jack, 1 x DC-in * Supports up to 3 display simultaneously
Power Supply	150W Power Adapter	19Vdc, 3.42A 65W Power Adapter
Dimension / Weight	199.7mm x 119.7mm x 33.9mm (0.81L)	199.7 x 119.7 x 33.9 mm (0.8L)
Weight	1 kg (barebone)	1.04 kg (barebone)
Accessories	<ul style="list-style-type: none"> • Warranty Card • AC Adapter • Power Cord • VESA Mount (optional) • WiFi Antenna (External Antenna) 	<ul style="list-style-type: none"> • Warranty Card • AC Adapter • Power Cord • VESA Mount (optional) • WiFi Antenna (External Antenna)
Available SKUs	<input checked="" type="radio"/> Mini PC <input checked="" type="radio"/> Kits <input type="radio"/> Boards	<input checked="" type="radio"/> Mini PC <input checked="" type="radio"/> Kits <input type="radio"/> Boards

ROG NUC (2025)

GAMING REDEFINED: POWER MEETS PRECISION



ROG NUC (2025) embodies the ROG For Those Who Dare spirit, pushing the boundaries of intensive graphics processing, in a compact form factor. The latest ROG NUC (2025) boasts powerful chipsets and graphics processing capabilities for lag-free streaming, editing, and gaming. Three fans plus dual vapor chambers ensure silent cooling, while extensive connectivity options including Intel® Killer™ Wi-Fi 7 ensure smooth online gaming experiences.



Hardcore Gaming Power

Intel® Core™ Ultra processors (Series 2)



ROG NUC (2025) is engineered to deliver exceptional responsiveness and efficiency during intense gaming sessions, harnessing the prowess of Intel® Core™ Ultra 9 275HX/Ultra 7 255HX processor (Series 2) three AI engines – GPU, NPU, and CPU – for high throughput, low power, and fast response.

NVIDIA® GeForce RTX™ 50 Series Laptop GPU



Featuring Nvidia® Blackwell architecture and NVIDIA® GeForce RTX™ 5080, 5070Ti, 5070, 5060 Laptop GPU, ROG NUC (2025) delivers significant performance enhancements over the previous RTX 40-series. With advanced ray tracing and AI optimization, the powerful GPU ensures smooth gameplay at high settings, providing an immersive experience with realistic visuals.

Silent Cooling



Three Fans & Dual Vapor Chamber

Featuring three fans plus dual vapor chambers, ROG NUC (2025) efficiently dissipates heat, allowing users to push the limits during demanding gameplay without compromising performance.



QuietFlow Cooling

An innovative thermal design ensures the system remains quiet (<4.5 BA) even under heavy loads.



Intelligent Thermal Management

The system automatically adjusts fan speeds based on real-time temperature and workload, ensuring that cooling power is optimized for each gaming scenario.



Enhanced Airflow Design

Chassis design has been optimized to promote effective ventilation to maintain lower internal temperatures and reduce the risk of thermal throttling.

Ultra-Responsive Connectivity

Intel® Killer™ Wi-Fi 7 and Bluetooth® 5.4 ensure fast, uninterrupted online performance for competitive gaming. Speeds of up to 46Gbps and technologies like Multi-Link Operation ensure fast downloads and uninterrupted gaming.





NEW **ROG NUC (2025)**

Operating System Support	Microsoft Windows 11 Home
Display	Up to Five 4K Displays
CPU	Intel® Core™ Ultra 9 (Series 2) 275-HX
GPU	NVIDIA® GeForce RTX™ 5080 Laptop GPU 16GB GDDR7
Memory	Dual-channel DDR5-6400-CSODIMM 1.1V, 96GB max Intel® XMP 3.0 memory compatible
Storage	Two M.2 22x80 SSD NVMe slots* (One PCIe x4 Gen 4, One PCIe x4 Gen5) Toolless Mount
Front I/O Ports	2 x USB 3.2 Gen2 Type-A 1 x USB Gen 3.2 Type C1x 3.5mm Headset Jack
Back I/O Ports	One Thunderbolt™ 4 / USB4 Type-C port with DP 2.1 and (5V@3A / 5V@1.5A / 9V@2A / 12V@1.5A) fast charging profiles 2 x HDMI 2.1 FRL port 2 x DisplayPort 2.1 ports 4 x USB 3.2 Gen2 Type-A 1 x RJ45 LAN 1 x DC-in 1 x Kensington Lock
Wireless	Intel® Killer™ Wi-Fi 7 AX1750x, 802.11be, up to 5.8 Gbps w/ 2x2, 320 MHz, 4K QAM + Bluetooth® 5.4 (Key-E M.2 Slot)
LAN	Intel® 2.5 Gb Ethernet port
Audio	3.5mm front stereo headset jack Up to 7.1 multichannel digital audio via HDMI or DisplayPort signals
AC Adapter	19.5VDC 330W power supply
Chassis	ARGB lighting with ROG Armoury Crate w/ Aura sync software Vertical stand integrated
Important Specs	Tool less chassis with metal inner frame Kensington* lock with base security
Dimension	282.4mm x 187.7mm x 56.5mm (bottom: 146mm)

Advanced AI



ROG NUC Compact Gaming Power



ASUS redefines gaming with the daring new ROG NUC—the first of its kind. Powered by Intel® Core™ Ultra 9 and NVIDIA® GeForce® RTX 40 Series Laptop GPU, this compact beast offers unstoppable performance in just 2.5 liters. Game, stream, edit, and more—all without limits. Ready for easy upgrades and paired with Raikiri Pro controller compatibility, the ROG NUC is the ultimate choice for gamers craving power and versatility in a sleek form.



Space-saving and customizable chassis

Ultra-Small—only 2.5 liters in size and packed with the same I/Os as a desktop system 10 times the size.

- 180 x 270 x 50mm (7 x 10.6 x 2in) Less than 2.5 Liter Chassis
- ASUS AURA Sync RGB lighting



AI Capability at its Best

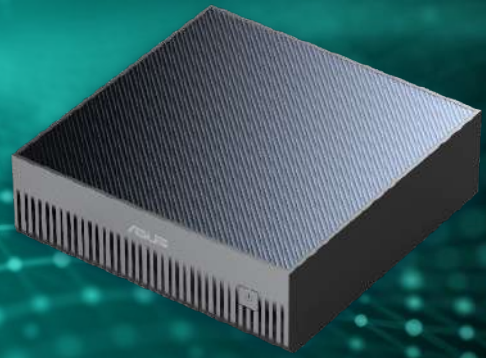
Experience Intel's first integrated NPU purpose-built for efficient client AI, ideal for sustained AI processing and offloading, and common-sense development. From image processing and AI video editing to Generative AI, streaming, and gaming, the Intel® Core™ Ultra processor's built-in AI capabilities keep the ROG NUC on the cutting edge of AI possibilities.


ROG NUC 760 Mini PC

ROG NUC 970 Mini PC

CPU	Intel® Core™Ultra 7 Processor 155H (24MB Cache up to 4.80 GHz)	Intel® Core™Ultra 9 Processor 185H (24MB Cache up to 5.10 GHz)
Discrete Graphics	NVIDIA® GeForce® RTX 4060 Laptop GPU w/ 8GB GDDR6 VRAM	NVIDIA® GeForce® RTX 4070 Laptop GPU w/ 8GB GDDR6 VRAM
Board Number	NUC14SRBU7A	NUC14SRBU9B
CPU Total Cores	16	16
CPU Total Threads	22	22
CPU Max Turbo Frequency	4.80 GHz	5.10 GHz
Included Storage	512GB Gen4 NVMe	1TB Gen4 NVMe
Included Memory	16GB (2x 8GB) DDR5-5600	32GB (2x 16GB) DDR5-5600
Max Memory Size	64 GB	64 GB
# of Memory Slots	2	2
Memory Types	DDR5-5600 1.1V SO-DIMM	DDR5-5600 1.1V SO-DIMM
Max # of Memory Channels	2	2
ECC Memory Supported*	No	No
Internal Drive Form Factor	M.2 SSD	M.2 SSD
# of Internal Drives Supported	3	3
Removable Memory Card Slot	SD Express PCIe G3 NVMe UHS-I	SD Express PCIe G3 NVMe UHS-I
M.2 Card Slot (storage)	3x 22x80	3x 22x80
Graphics Output	1x Thunderbolt™ 4 1x HDMI2.1 (FRL) 2x DP1.4a	1x Thunderbolt™ 4 1x HDMI2.1 (FRL) 2x DP1.4a
# of Thunderbolt™ Ports	1x rear Thunderbolt™ 4	1x rear Thunderbolt™ 4
# of USB Ports	6	6
USB Configuration	Front: 2x Type-A; Rear: 2x Type-A 3.2 Gen2 2x Type-A 2.0	Front: 2x Type-A; Rear: 2x Type-A 3.2 Gen2 2x Type-A 2.0
Audio (back channel + front channel)	7.1 digital; L+R+mic (F)	7.1 digital; L+R+mic (F)
Integrated LAN	Intel® Ethernet Controller i226-V	Intel® Ethernet Controller i226-V
Wireless Included	Intel® Killer™ Wi-Fi 6E AX1690 (i/s)	Intel® Killer™ Wi-Fi 6E AX1690 (i/s)

Ultra-small AI Supercomputer **ASUS Ascent GX10**



Unparalleled AI Performance

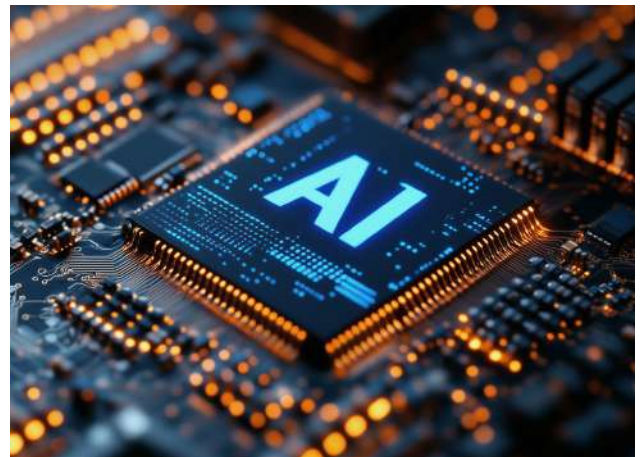
The groundbreaking ASUS Ascent GX10 AI Supercomputer, powered by the state-of-the-art NVIDIA® GB10 Grace Blackwell Superchip found in the NVIDIA DGX Spark, brings petaflop-scale AI computing capabilities directly to the desks of developers, AI researchers, and data scientists.

Up to 1,000 AI TOPS of Processing Power

Delivers exceptional AI performance, enabling seamless handling of large AI workloads.

128GB of Coherent Unified System Memory

Empowers model development, experimentation, and inferencing with ample memory capacity.



Built on Cutting Edge Architecture



NVIDIA GB10 Grace Blackwell Superchip

Advanced chip features a robust Blackwell GPU with fifth generation Tensor Cores and FP4 support.

High Performance 20-Core Arm CPU

Enhances data preprocessing and orchestration, accelerating model tuning and real-time inferencing.

NVLink® -C2C Technology

Provides a cohesive CPU+GPU memory model with five times the bandwidth of PCIe 5.0.



Handles Large Parameter Gen AI Models

Support for AI Models 200 Billion Parameters

Prototype, fine-tune, and infer the latest AI reasoning models directly on your desktop.

Integrated NVIDIA® ConnectX®-7 Network Technology

Link two ASUS Ascent GX10 systems to handle even larger models, such as Llama 3.1 with 405 billion parameters.



Local Development, Scalable Deployment

Seamless Transition to Cloud

Leverage NVIDIA AI platform software architecture to move models from desktop environments to DGX Cloud or any accelerated cloud or data center infrastructure with minimal code adjustments.

Cost-Effective Experimentation Platform

Free up essential compute resources in clusters better suited for training and deploying production models.

ASUS Chromebox Solutions

- Affordability
- Compact Size
- Ease of Use
- Security
- Performance
- Reliability



For Commercial

ASUS Chromebox are compact, lightweight, tough and reliable, and deliver powerful performance to drive everyday apps and learning resources. With extensive connectivity, including a full set of I/O ports, they're a great choice for any distance-learning setting.

Compact and Powerful

ASUS Chromebox is compact but powerful. It's less-than-1-liter chassis takes up minimal space on a desk, making it well-suited for education scenarios.

Stability and Reliability

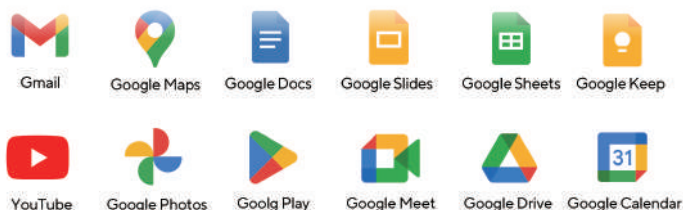
ASUS Chromebox undergo rigorous noise, vibration, drop and thermal-shock tests to ensure they meet exacting ASUS standards and exceed industry requirements.

Comprehensive Connectivity

ASUS Chromebox provides comprehensive connectivity with multiple ports, including a configurable port to support legacy devices or additional displays.

Precision Manufacturing Yield Better Products

ASUS Chromebox are engineered to exacting standards to guarantee quality, with only the best components used to ensure outstanding real-world performance and reliability.



For Education

ASUS Chromebox provides new and enriching experiences in and out of the classroom. It is simple, secure and has an array of education apps built in so students and teachers can work and learn right out of the box.



Great manageability:

You can set up in minutes and centrally manage 100 to 100,000 devices across your school, district or region.



Perfect for sharing:

Students can share a single device but still have a personalized experience just by signing in to their individual accounts.



Cost-effective:

Chromebox is made to lower your total cost of ownership with a value-packed combination of hardware and software.

Easy collaboration:

Create, share and edit files in real time with Google Workspace for Education tools. Everyone is on the same page, and as files are automatically synchronized in the cloud.

Seamless learning:

Enjoy a consistent experience on any device that is logged into a Google account. Study and get homework done anywhere and anytime you want to.

ASUS Chromebox 5a

Simple, Speedy, and Secure

- ASUS Chromebox 5a features the power of 13th Generation Intel® Core™ Processors.
- Dual HDMI, DisplayPort and USB-C® 3.2 Gen 2 ports support up to four 4K displays.
- Automatic software and security updates.

* Wireless charger is optional



ASUS Chromebox 5a



ASUS Fanless Chromebox CF40

Operating System Support	ChromeOS / Chrome Enterprise	ChromeOS / Chrome Enterprise
CPU	Intel® Core™ i7-1355U Processor, Intel® Core™ i5-1355U Processor, Intel® Core™ i3-1355U Processor	Intel® Celeron® Processor N4500
Chipset	Integrated	Integrated
Graphics	Intel® Iris® Xe Graphics (i5/i7) Intel® UHD Graphics (i3/Celeron)	Intel® UHD Graphics
Memory	2 x DDR4 SO-DIMM, Max. 16GB x 2 1 x DDR4 SO-DIMM, Max 16GB x 1	LPDDR4X 4G/8G/16G
Storage	1 x M.2 2280 PCIe Gen4x4, supports 128GB~512GB NVMe™ SSD (Core)	eMMC onboard, supports 32GB~128GB
Wireless Network	Intel® Wi-Fi 6E AX211, 2x2, and Bluetooth® 5.3 (BT version depends on OS support)	Intel® Wi-Fi 6 AX201, 2x2, and Bluetooth® 5.2 (BT version depends on OS support)
LAN	10/100/1000 Mbps	10/100/1000 Mbps
Front I/O Ports	1 x USB 3.2 Gen2 Type-A (with BC1.2, 5V/0.9A, 10Gbps) 3 x USB 3.2 Gen1 Type-A (with BC1.2, 5V/0.9A, 5Gbps) 1 x Audio Jack (Line out/Mic in/Headphone out) 1 x Micro SD card reader	3 x USB 3.2 Gen1 Type-A (5V/0.9A, 5Gbps) 1 x Audio Jack (Line out/Mic in/Headphone out)
Side I/O	1 x Kensington Lock slot 1 x Recovery button	N/A
Rear I/O Ports	2 x USB 3.2 Gen1 Type-A (5V/0.9A, 5Gbps) 1 x USB 3.2 Gen2 Type-C (with DP1.4/PD-in*, 5V/3A, 10Gbps) 1 x HDMI 1 x DisplayPort 1.4 1 x RJ45 LAN 1 x DC-in	2 x USB 3.2 Gen1 Type-A (5V/0.9A, 5Gbps) 1 x USB 3.2 Gen1 Type-C (with DP1.4/PD-in*, 5V/3A, 5Gbps) 1 x HDMI 2.1 (Up to 4K@60Hz) 1 x RJ45 LAN 1 x DC-in 1 x Recovery button 1 x Kensington Lock slot
Wireless Charger	N/A	N/A
Card Reader	Micro SD card reader	N/A
Power Supply	19Vdc, 4.74A, 90W Power Adapter 19Vdc, 3.42A, 65W Power Adapter	65W Power Adapter
Dimension / Weight	166.5 x 165.8 x 45.9 mm / 0.8 kg	166.2 x 119.7 x 33.9 mm / 0.8 kg

ASUS Room Kit for Google Meet

Smart, one-touch HD video-conferencing with anyone, anywhere

ASUS Room Kit for Google Meet is the smart video-conferencing solution in stunning HD resolution. The package includes – Google Meet Compute System powered by an up to Intel® Core™ i5 processor with auto-zoom technology to keep the images focused on the meeting participants. ASUS Room Kit for Google Meet also comes with a touchscreen control panel for one-touch meeting management, and a high-quality speakermic box that employs echo-cancellation and noise-suppression technologies to deliver crystal-clear audio. ASUS Room Kit for Google Meet improves team efficiency through real-time collaboration, making it the perfect choice for the modern workplace.

The new look of Compute System

Stylish and Reliable

- Single side ports for easy access & cabling
- Enterprise grade manufacturing with rigorous testing
- Auto-updating, always up-to-date
- On-device encryption and verified boot self-check



ePTZ UHD Camera

Ultra-wide FOV camera for huddle room

- Premium video quality powered by Sony Ultra 4K sensor
- ePTZ and 4X zoom with Full HD 1080p output
- True hardware WDR (Wide Dynamic Range)



True PTZ Camera

Masterful Navigating and Presenting

- Premium video quality powered by Sony Ultra 4K sensor
- 24X lossless zoom to deliver outstanding clarity
- Accurate AI auto-framing for up to 7 meters away
- Smart Composition for up to 9 participants
- Easy switch between multiple tracking modes with a remote
- Supports HDMI output for extra display
- Advanced WDR (Wide Dynamic Range)



Speakerphone

Face-to-Face Audio Quality

- Two omnidirectional microphones support 360° pickup
- 90dB SPL at 0.5m of maximum output
- Full duplex echo cancellation and noise suppression
- Double-talk detection for fluid communication
- Supports phone-in (2-way) and line-out (1-way) function
- Adapt to various spaces with expansion speakerphone



Expansion Speakerphone

Adapt to Any Space

- Identical performance as the main speakerphone
- Supports up to 2 expansion speakerphones
- 5M daisy-chain cable for flexible setup





ASUS Room Kit for Google Meet Starter Kit



ASUS Room Kit for Google Meet Small/Medium Room Kit



ASUS Room Kit for Google Meet Large Room Kit

CPU	Intel® Core™ i5-1335U Processor	Intel® Core™ i5-1335U Processor	Intel® Core™ i5-1335U Processor
Chipset	Integrated	Integrated	Integrated
Memory	16GB LPDDR4X	16GB LPDDR4X	16GB LPDDR4X
Storage	PCIe Gen4x4 NVMe 256G	PCIe Gen4x4 NVMe 256G	PCIe Gen4x4 NVMe 256G
Wireless Network	Intel® Wi-Fi 6E AX211, 2x2, and Bluetooth® 5.3* (* Bluetooth version depends on OS support)	Intel® Wi-Fi 6E AX211, 2x2, and Bluetooth® 5.3* (* Bluetooth version depends on OS support)	Intel® Wi-Fi 6E AX211, 2x2, and Bluetooth® 5.3* (* Bluetooth version depends on OS support)
LAN	2.5G Ethernet, 10/100/1000/2500 Mbps	2.5G Ethernet, 10/100/1000/2500 Mbps	2.5G Ethernet, 10/100/1000/2500 Mbps
Rear I/O Ports	2 x USB 3.2 Gen2 Type-A 2 x USB 3.2 Gen2 Type-C (DisplayPort/USB) 1 x Thunderbolt 4 (DisplayPort/USB) 2 x HDMI with CEC 1 x RJ45 1 x DC jack 1 x recovery button 1 x power button	2 x USB 3.2 Gen2 Type-A 2 x USB 3.2 Gen2 Type-C (DisplayPort/USB) 1 x Thunderbolt 4 (DisplayPort/USB) 2 x HDMI with CEC 1 x RJ45 1 x DC jack 1 x recovery button 1 x power button	2 x USB 3.2 Gen2 Type-A 2 x USB 3.2 Gen2 Type-C (DisplayPort/USB) 1 x Thunderbolt 4 (DisplayPort/USB) 2 x HDMI with CEC 1 x RJ45 1 x DC jack 1 x recovery button 1 x power button
Power Supply	90W Power Adapter	90W Power Adapter	90W Power Adapter
Dimension	284 x 135 x 29.5 mm	284 x 135 x 29.5 mm	284 x 135 x 29.5 mm
Accessories	<ul style="list-style-type: none"> • ePTZ UHD Camera • Speakerphone • Remote Control 	<ul style="list-style-type: none"> • ePTZ UHD Camera • Speakerphone • Touch Control Panel 	<ul style="list-style-type: none"> • PTZ Camera • Speakerphone • Touch Control Panel

